

NITRO[®]

PERFORMANCE FISHING BOATS



2021

RELEASE THE CHAMPION WITHIN

Inside every angler is a champion waiting to emerge. To set them free, you'll need a precision fishing tool with the power, performance and reliability to stand up to the rigors of tournament competition—and to do it reliably every time, whether you're simply fishing the lake with a buddy on a peaceful weekend or battling a legion of other anglers with their eyes on the same trophy. Either way, there's a NITRO® that will take you there. An unwavering attention to technical detail and a relentless pursuit of quality allows us to deliver championship boats to the finest anglers on the planet—and these same boats can belong to you. Each one is a high performance machine that gives their owner the upper hand. They are powerful syntheses of man and machine that push the boundaries of technical innovation. Because the champion inside you yearns to emerge—whether that's mounting the stage and hoisting a trophy or just being the champion your family deserves.

NITRO
PERFORMANCE FISHING BOATS



2021 NITRO PRO FISHING TEAM



**KEVIN
VANDAM**

4-Time Bassmaster Classic® Champion
7-Time BASS Angler of the Year

Hometown Kalamazoo, MI
Years Pro 30
Top 10 Finishes (Wins) 121 (25)
Career Winnings \$6.8 million

The NITRO® Pro Team has never been stronger, with 11 Bassmaster® Classic titles, the first REDCREST Championship and dozens of national-tour-level first-place finishes on their collective mantels. And 2021 looks to be the most exciting year yet!

For three decades, the NITRO Pro Team, led by Kevin VanDam, have dominated national tournaments and in doing so, taught anglers around the world the tricks of the trade and instilled in them a deeper love for fishing.

In 2021, the competition is going to be fast and furious, and there are sure to be some monster pigs and big winnings on the line. Keep your eyes on these guys—they've got some unforgettable days on the water just ahead!



**EDWIN
EVERS**

MLF Bass Pro Tour REDCREST Champion
MLF Bass Pro Tour Points Winner
2016 Bassmaster Classic Champion

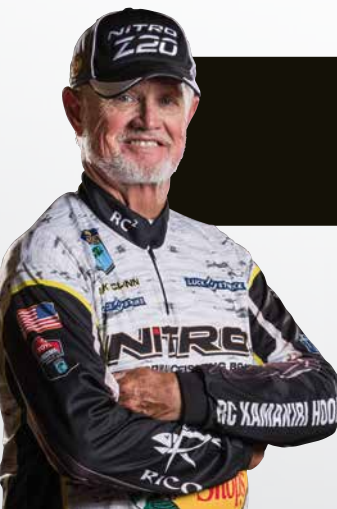
Hometown Talala, OK
Years Pro 22
Top 10 Finishes (Wins) 74 (13)
Career Winnings \$3.64 million



**OTT
DEFOE**

2019 Bassmaster Classic Champion

Hometown Blaine, TN
Years Pro 14
Top 10 Finishes (Wins) 50 (7)
Career Winnings \$2.2 million



**RICK
CLUNN**

4-Time Bassmaster Classic Champion
32 Classic Appearances
Oldest Angler to win a Bassmaster Elite Series at the age of 72

Hometown Ava, MO
Years Pro 48
Top 10 Finishes (Wins) 128 (18)
Career Winnings \$3.25 million



**CHRIS
LANE**

2012 Bassmaster Classic Champion

Hometown Guntersville, AL
Years Pro 14
Top 10 Finishes (Wins) 39 (8)
Career Winnings \$2.1 million



**TIMMY
HORTON**

Hometown Muscle Shoals, AL
Years Pro 21
Top 10 Finishes (Wins) 42 (6)
Career Winnings \$1.8 million



**JOSH
BERTRAND**

Hometown Queen Creek, AZ
Years Pro 8
Top 10 Finishes (Wins) 14 (1)
Career Winnings \$717,000



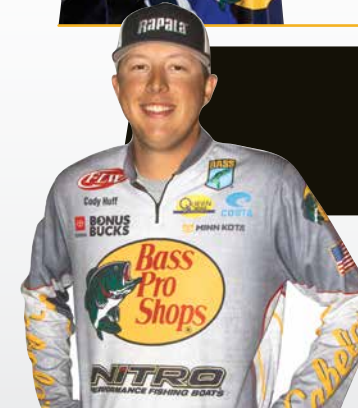
**ANDY
MONTGOMERY**

Hometown Blacksburg, SC
Years Pro 13
Top 10 Finishes (Wins) 36 (2)
Career Winnings \$1.1 million



**JAMIE
HARTMAN**

Hometown Russellville, AR
Years Pro 4
Top 10 Finishes (Wins) 47 (9)
Career Winnings \$548,000



**CODY
HUFF**

Hometown Ava, MO
Years Pro 1
Top 10 Finishes (Wins) 14 (4)
Career Winnings \$150,000



**MICHAEL
NEAL**

Hometown Dayton, TN
Years pro 9
Top 10 Finishes (Wins) 28(3)
Career Winnings \$835,000



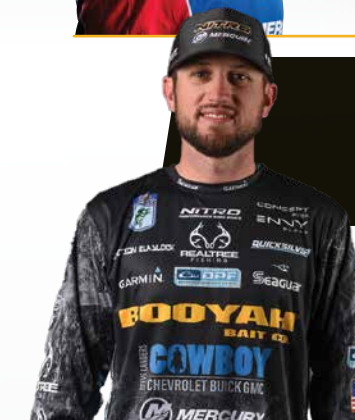
**JONATHON
VANDAM**

Hometown Kalamazoo, MI
Years Pro 8
Top 10 Finishes (Wins) 18 (2)
Career Winnings \$587,000



**BRIAN
SNOWDEN**

Hometown Reeds Spring, MO
Years Pro 22
Top 10 Finishes (Wins) 20 (1)
Career Winnings \$1.1 million



**STETSON
BLAYLOCK**

Hometown Benton, AR
Years Pro 12
Top 10 Finishes (Wins) 41 (6)
Career Winnings \$1.2 million

2021 NITRO NORTHERN PROS



**GARY
PARSONS**

Hometown Glidden, WI
Years Pro 36
Top 10 Finishes 81
Career Winnings \$1 million-plus



**KEITH
KAVAJECZ**

Hometown Kaukauna, WI
Years Pro 34
Career Winnings \$1,020,000



**DALE
STROSCHEIN**

Hometown Sturgeon Bay, WI
Years Guiding 35
Years Pro Angler 15
Career Winnings 150,000



**CHASE
PARSONS**

Hometown Denmark, WI
Years Pro 17
Top 10 Finishes 20
Career Winnings \$295,000

GET PAID TO FISH!



When you're the best in the business, you get pick of the litter for all of your gear. Kevin VanDam has an unparalleled tournament record and through it all he's relied on NITRO to take him to the top. More trophies, more checks and more dominance, delivered by NITRO. The NITRO Z Series: GOAT tested, GOAT approved.

Photo Credit: Garrick Dixon / Major League Fishing



It's everyone's dream, and the Bass Pro Shops® Tournament Rewards® program makes it real. Win or be in the highest top 10 finisher in a NITRO®-approved tournament and get cash! The Bass Pro Shops® Tournament Rewards program can help you enhance your tournament winnings—whether you compete at the top levels of fishing or a grassroots event. Through participation in this industry-leading program, you can receive thousands in cash when you compete and win eligible tournaments from your NITRO boat. Millions of dollars have been awarded to NITRO anglers over the years, and some of that money can be yours.

FOR MORE INFORMATION AND A COMPLETE LIST OF ELIGIBLE TOURNAMENTS,
GO TO [TOURNAMENT-REWARDS.COM](https://tournament-rewards.com)

Registration must be completed and submitted prior to participation in a qualifying event in order to be eligible for prizes. Program term begins January 1, 2021, and ends December 31, 2021.

SMART DESIGN. TOP QUALITY CONSTRUCTION

From the hand-laid fiberglass hulls, to Mercury® factory rigging, to the smartly organized tackle and rod storage, we've attended to every detail on every NITRO® boat to give you the assurance that nothing will get in the way of fishing.

Our Lean Sigma manufacturing methods add value and reduce waste—both in labor and materials—at every step in the process, meaning more boat for less money.

Structurally, the NITRO lineup is second to none, thanks to the unparalleled skill of our master craftspeople. Inside the hull, you'll find a one-piece, gelcoated fiberglass stringer system that's double bonded to the hull to

create a super-strong, unitized structure. The stringer also forms the interior of the storage/rigging compartments, and the gelcoat finish makes them durable and easy to clean.

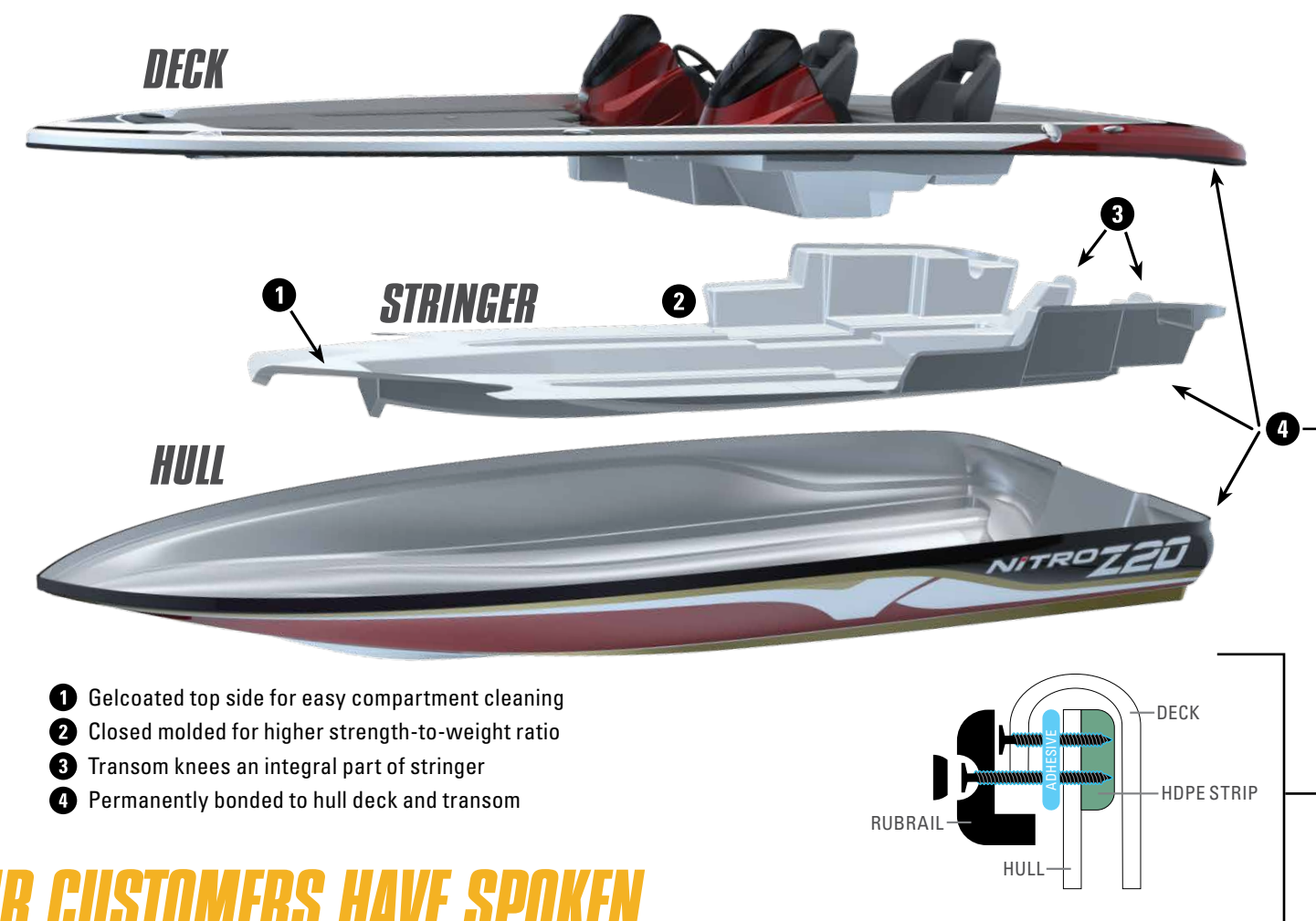
Factory rigging gives you the best setup every time. Mercury-trained technicians rig all our boats at our factory. This means your boat is rigged to exact specifications that focus on quality, consistency and efficiency. We're able to pass along cost savings to you while delivering a boat that requires significantly less dealer preparation. This lowers your dealer's costs while also freeing up technicians to respond to your service and maintenance needs.



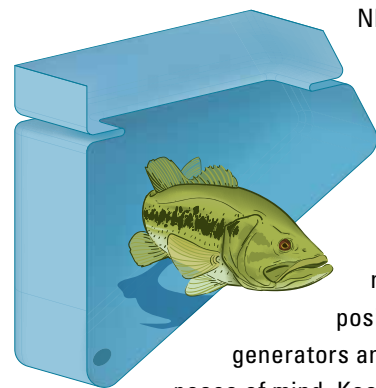
ONE-PIECE STRINGER SYSTEM

EXCLUSIVE TO NITRO Z SERIES BOATS

NITRO® boats are built rock-solid from the inside out, and one of the most important components is one you'll barely see. Sandwiched between the hull and the deck is a solid fiberglass substructure called a stringer (or liner) that unitizes the boat. Transom knees are part of the stringer—not added on later—to form an unyielding foundation upon which to bond the 100% composite transom. The stringer, transom, deck and hull are chemically bonded and mechanically fastened together to become one solid structure for a lifetime of top performance and tourney-winning fishability.



GUARDIAN LIVEWELLS



NITRO-exclusive GUARDIAN™ livewells are highly valued by our pros as the best in the industry. Distinguishing features include a 360° baffle around the top edge that keeps water from sloshing and banging up fish, rounded corners to promote natural motion, angled bottoms for positive draining and auto-fills, oxygen generators and powerful, reliable pumps for your peace of mind. Keep your fish healthy and vibrant with GUARDIAN livewells—standard on all NITRO boats.



Z-CORE SEATING

Working closely with Kevin VanDam, NITRO innovated the Z-CORE™ Seating System—a total redesign of the traditional high-performance bass boat seat.

The seat starts with an all-composite, rotomolded frame. The frame is contoured to cradle the torso and has just enough flex to

absorb punishing impacts on the water. A recess at the bottom is laced with Force Flex elastic suspension for even more added comfort, and wrap-around wings hold you in place when running over chop.

The Z21 and Z20 Z PRO packages feature a power-inflatable air cushion that supports the upper back when in the crouched running position.

OUR CUSTOMERS HAVE SPOKEN

For eight consecutive years, NITRO fiberglass outboard boats have been recognized for excellence in customer satisfaction by the National Marine Manufacturers Association® (NMMA®).

This means that hundreds of feedback surveys returned by actual purchasers of NITRO fiberglass fishing boats reported average satisfaction ratings above 90 points on a scale of 100. With a NITRO, you get a steadfast dedication to quality that you can see in the fit and finish, feel in the smooth ride and count on for a lifetime. Thanks to the skill and experience of our master fiberglass craftspeople, care is taken at every step in the process to ensure the finest, longest-lasting boat at the best price.

The CSI award from NMMA is a tribute to our skilled and dedicated boat makers and to the thousands of people in our company and dealer network

who provide support to our customers. By working hard and working smart, they are delivering the promise of quality and value that has placed NITRO solidly among the leaders in performance fishing boats.



NMMA® **RECOGNIZED FOR EXCELLENCE IN CUSTOMER SATISFACTION EIGHT YEARS IN A ROW**



HULL DESIGN REDEFINED

Throughout its history, NITRO® has been known for smooth-riding boats that run dry and stable in rough water—and that fish with the best of them. Advanced design technology is raising the bar, retaining NITRO strength and adding speed, agility and even quicker holeshots. The NITRO VORTEX TECHNOLOGY™ (NVT™) hull is a revolutionary design that uses a series of parabolic curves instead of traditional strakes. The result is a hull with exceptional top-end speed and lift—plus improved acceleration—all while maintaining superior control and handling. The organic shape of the NVT hull also enhances consistency in the manufacturing process and provides exceptional strength-to-weight ratio. Available exclusively on the Z17, Z18, Z19, Z20 and ZV20.



NITRO-EXCLUSIVE RAPID PLANING SYSTEM (RPS) TRANSOM



The Z17, Z18, Z19, Z20, Z21, ZV20 and ZV21 all feature our exclusive RAPID PLANING SYSTEM™ (RPS) transom. The notch in the center of the transom releases trapped air on takeoff, and the set-back design of the transom delivers maximum water flow to the propeller. The result is a faster holeshot, enhanced performance at the top end and increased overall efficiency.

EXPLORE THE INTERIOR OF THE NITRO Z21

From decks to seating to storage to livewells, we've designed each NITRO® performance fishing boat to help optimize your productivity on the water. Here's a detailed breakdown of the interior features of our Z Series flagship boat, the Z21.

- 1 MINN KOTA® FORTREX®**
24V, 80-lb. thrust, 45" shaft trolling motor
- 2 BOW COMMAND CENTER**
w/trim & navigation light switches, plus room for optional 10" flush-mount fishfinder & tool/drink holder
- 3 RECESSED FOOT PEDAL**
for easy & comfortable trolling
- 4 DUAL-POSITION BICYCLE SEAT BASE**
bow deck position for standard bike seat w/hydraulic pedestal
- 5 NAV LIGHTS INTEGRATED INTO LOW-PROFILE GUNNELS**
create more interior casting space & no hassle w/nav light poles
- 6 ANTI-FATIGUE BOW DECK PADDING**
for all-day fishing comfort
- 7 ROD HOLD-DOWN STRAPS**
keep rods handy & secure
- 8 4 PULL-UP MOORING CLEATS**
to reduce possible snags
- 9 LOCKABLE DUAL ROD STORAGE**
w/lift assists & port organizer to neatly hold rods & gear up to 8' w/automatic light
- 10 LOCKABLE CENTER STORAGE**
oversized, w/TACKLE MANAGEMENT SYSTEM™, magnetic lure holders, manual light & ventilation fan to keep all bow storage compartments dry
- 11 LOCKABLE DUAL GEAR STORAGE BOXES**
w/manual lights
- 12 TOOL & DRINK HOLDERS**
on both sides of step-up cooler
- 13 STEP-UP BOW DECK COOLER**
heavily insulated w/trash receptacle & snap-in sandwich tray
- 14 CONSOLE**
console w/impressive leg room, Lowrance® Elite-7 Ti² fishfinder, touchscreen switch panel, key fob controller & hydraulic steering
- 15 OPTIONAL REMOVABLE PORT CONSOLE** (not shown)
w/hardware, tinted windscreen & glovebox
- 16 LARGE PULL-OUT STORAGE DRAWER**
beneath port console for quick access
- 17 GRAB HANDLES**
engineered composite handles provide peace of mind
- 18 Z-CORE™ SEATING SYSTEM**
w/Force Flex suspension & contoured, rotomolded frame (driver & passenger seats)
- 19 BEHIND-SEAT NET STOW**
easy access to net stored in an unobtrusive location
- 20 INTEGRATED TOURNAMENT RULER**
located right next to livewell for faster culling
- 21 MOLDED, DROP-IN STORAGE**
w/lock & tackle tray holders
- 22 DELUXE FOLD-DOWN FISHING SEAT BASE**
Aft deck position for standard fishing seat w/hydraulic pedestal
- 23 TWO 19-GAL. GUARDIAN™ LIVEWELLS**
w/anti-slosh lip, freshwater fill pump, recirculator pump, timers, oxygen generation system & pump-out
- 24 BATTERY STORAGE AREA**
w/drop-in trays for gear/tools
- 25 AUTOMATIC BILGE PUMP**
to quickly & efficiently remove bilge water
- 26 HAND-LAID PERFORMANCE HULL**
for maximum durability & a smooth, dry ride in rough conditions
- 27 ANGLED, FOLDING BOARDING LADDER**
accommodates Power-Pole™ or Talon™
- 28 RAPID PLANING SYSTEM™ TRANSOM**
provides superior planing w/minimal bow rise & extreme shallow-water performance
- 29 RIGGING TUBE**
for clean & neat cable routing
- 30 ADJUSTABLE 12" JACK PLATE**
change the height of the motor for maximum performance w/varying loads
- 31 BATTERY ON/OFF SWITCH**
w/emergency jump start



FULL NITRO LINEUP

COMPARISON

With this handy comparison chart, you can easily see the relative sizes and features of the entire 2021 NITRO® lineup. Compare high-level specifications like length, beam, livewells, storage, and horsepower rating to drill down into which boat is right for you and your particular fishing and/or recreational needs. You can find full specifications for each boat at nitroboats.com.

											
DESCRIPTION		Z21	Z20	Z19	Z18	Z17	Z19 SPORT	ZV21	ZV20	ZV19	ZV19 SPORT
SPECIFICATIONS	Length	21' 2"	20' 2"	19' 4"	18' 8"	17' 4"	19' 5"	21' 7"	20' 2"	18' 11"	18' 11"
	Beam	7' 11"	7' 10"	7' 10"	7' 10"	7' 6"	7' 9"	8' 4"	8' 4"	8' 6"	8' 6"
	Storage Length	24' 4"	23' 8"	22' 7"	21' 3"	20' 9"	21'	24' 7"	24' 1"	22' 7"	22' 7"
	Max. Person Cap.	4	4	4	4	3	5	6	6	6	6
	Fuel Capacity	55 gal.	50 gal.	50 gal.	40 gal.	24 gal.	26 gal.	64 gal.	55 gal.	45 gal.	45 gal.
	Average Weight	2,150 lbs.	2,000 lbs.	1,850 lbs.	1,700 lbs	1,450 lbs.	1,675 lbs.	2,900 lbs.	2,900 lbs.	2,300 lbs.	2,300 lbs.
	Average Pkg. Weight	4,050 lbs.	4,050 lbs.	3,500 lbs.	3,200 lbs.	2,650 lbs.	3,236 lbs.	5,500 lbs.	5,500 lbs.	4,500 lbs.	4,500 lbs.
INTERIOR	Single Console	X	X	X	X	X					
	Dual Console						X	X	X	X	X
	Walk-Thru Windshield						X	Optional	Optional	Optional	Optional
	Rem. Port Console	Optional	Optional	Optional	Optional	Optional					
	Bow Deck Sq. Footage	45	42.5	34	34	32					
	Rod Storage	8'	8'	8'	8'	7' 6"	7'	8'	8'	8'	8'
	Livewells	Two 19 gal.	Two 19 gal.	Two 19 gal.	30 gal.	23 gal.	16 gal.	5.5 & 26 gal.	10 & 26 gal.	5.5 & 26 gal.	10 & 26 gal.
POWER & ELECTRONICS	No. of Seats	5	5	5	4	4	4	6	6	6	6
	Std. Mercury® Motor	250 L Pro XS® 4Str. w/TM	225 L Pro XS® 4Str. w/TM	200 L Pro XS® FourStroke	150 L FourStroke	115 ELPT Pro XS® FourStroke	150 L Pro XS® FourStroke	250 XL Verado® FourStroke	225 XL Pro XS® 4Str. w/DTS	200 XL Pro XS® FourStroke	150 XL Pro XS® FourStroke
	Max. Horsepower	300	250	200	175	115	200	400	300	225	225
	Std. Trolling Motor	24V, 80-lb. thrust, 45"	24V, 70-lb. thrust, 42"	24V, 70-lb. thrust, 42"	24V, 70-lb. thrust, 42"	12V, 55-lb. thrust, 42"	12V, 55-lb. thrust, 54"	36V, 112-lb. thrust, 60"	36V, 112-lb. thrust, 60"	24V, 70-lb. thrust, 60"	24V, 70-lb. thrust, 60"
	Std. Lowrance® Fishfinder	Elite-7 Ti² Combo w/GPS	HOOK Reveal 5C	HOOK Reveal 5C	HOOK Reveal 5C	HOOK² 4x	HOOK Reveal 5C	Lowrance® Elite-7 Ti2 Combo	Lowrance® Elite-7 Ti2 Combo RAM®-mounted fishfinder w/GPS	HOOK Reveal 5C	HOOK Reveal 5C
Optional Fishfinders		12" Bow & Console	12" Bow & Console	12" Bow & Console	12" Bow & Console	9" Bow & Console	9" Bow & Console	12" Bow & Console	12" Bow & Console	12" Bow & Console	12" Bow & Console

NITRO PRO PACKAGES

Available on almost every NITRO®, Pro packages give you a host of the most popular high-performance upgrade options at an incredible value—you can save thousands in comparison to buying and installing each component separately! These packages were developed by our pro anglers in response to a demand for ready-made packages of tournament-dominating accessories. You'll be ready to compete the day you pick up your boat!

PRO PACKAGES AVAILABLE ON THESE MODELS:

Z18, Z19, Z20, Z21, ZV19, ZV19 Sport, ZV20 & ZV21.

Features vary by model—visit NITRO.com for details.



UPGRADE & SAVE!

The prices below represent the amount you save on a NITRO Pro Package compared to purchasing a standard NITRO and purchasing all Pro Package accessories separately. Pricing is estimated and subject to change without notice.

Z18PRO	SAVE \$1,835	ZV19PRO	SAVE \$2,179
Z19PRO	SAVE \$3,340	ZV19PRO SPORT	SAVE \$1,980
Z20PRO	SAVE \$5,290	ZV20PRO	SAVE \$3,650
Z21PRO	SAVE \$7,085	ZV21PRO	SAVE \$4,670

Z21 ELITE LX

The Z21 Elite package features most of the upgrades from the Pro package (left), plus the most advanced fishing electronics from Lowrance®—enabling the NITRO-exclusive Z-TOUCH™ Command Center for touchscreen control of all boat functions.

- Bow Lowrance® HDS LIVE 12 gimbal-mounted
- Console Lowrance® HDS LIVE 16 flush-mounted
- 2 Power-Pole® 8' Blade Edition shallow-water anchors
- Lowrance® Ghost® (36V, 120-lb., 47")



Z-TOUCH

The touchscreen switch panel provides easy, quick control of numerous boat features, including livewells, master power and bilge pump. The fob expands on that with controls for the livewell, master power and trim!



TAKE CONTROL & BE THE LEADER

Z21

The NITRO® Z21 is designed with input from our leading pros, who between them hold one REDCREST championship, 11 Bassmaster Classic® titles and dozens of other first place finishes. It features an all-new 5" touchscreen switch panel with one-touch boat controls—including the First Fish function, which fills and recirculates the livewell with one touch so you can get right back to fishing. Plus, the NITRO VORTEX TECHNOLOGY™ (NVT™) hull provides a smooth, dry ride with optimal performance, and ample storage holds dozens of rods and tons of tackle.



"I've been relying on NITRO for 30 years, and they've taken me to the top of the professional fishing world. Try one out—they can't be beat for performance, reliability and fishability."

Kevin Vandam

KEVIN VANDAM

NITRO® PRO ANGLER
4-TIME BASSMASTER CLASSIC® CHAMPION



Z2i



Z2i

SPECIFICATIONS:

Hull Length
21' 2"

Beam
7' 11"

Transom Height
22.5"

Max. HP
300

Max. Person Capacity
4/825 lbs.

Fuel Capacity
55 gal.

Max. Weight Capacity
1,800 lbs.

Storage Length / Width
24' 4" / 8' 6"



STANDARD PACKAGE:

w/Mercury® 250 L Pro XS® FourStroke
w/Torque Master & Custom Trailer
(plus freight & prep)

\$52,595

OPTIONAL MOTOR:

300 L Pro XS® FourStroke w/Torque Master\$56,005
(plus freight & prep)



SCAN
TO LEARN MORE
AT NITROBOATS.COM



1. Modular, aerodynamic console design w/expansive leg clearance & large graph surface **2.** Two lift-out, molded aft storage boxes that will each accept seven 3700 tackle trays **3.** Oversized, lockable bow port & starboard rod lockers w/lift assists for rods up to 8'



Z2iPRO

Standard Package: w/Mercury® 250 L Pro XS® FourStroke w/Torque Master & Custom Trailer (plus freight & prep) **\$59,995**

Optional Motor:
300 L Pro XS® FourStroke w/Torque Master\$63,405
(plus freight & prep)

Professional Tournament Features Include:

- Bow Humminbird® SOLIX™ 10 DI G2 & console SOLIX 12 SI G2 fishfinders
- 2 Minn Kota® 10' Talon shallow-water anchors
- Minn Kota® Ultrex® 36V, 112-lb., 45" trolling motor w/MDI (MEGA Down Imaging) 2 & i-Pilot® Link™
- 3-way Ethernet communication between fishfinders & trolling motor
- Power-adjust pneumatic lumbar support for driver's seat
- Hot Foot™ throttle & Pro-Trim lever
- 4-bank, 40-amp battery charger

Z2iELITE HX Z2iELITE LX

Standard Package: w/Mercury® 250 L Pro XS® FourStroke w/Torque Master & Custom Trailer (plus freight & prep) **\$63,995**

Optional Motor:
300 L Pro XS® FourStroke w/Torque Master\$67,405
(plus freight & prep)

- The Z2i Elite HX package features most of the upgrades from the Pro package, plus the most advanced fishing electronics from Humminbird®—enabling the NITRO®-exclusive Z-TOUCH™ Command Center for touchscreen control of all boat functions.
- Z-TOUCH™ Command Center w/digital control of boat functions
 - Bow Humminbird® SOLIX™ 10 SI G2 flush-mounted fishfinder w/MEGA Down Imaging
 - Console Humminbird® SOLIX™ 15 SI G2 gimbal-mounted fishfinder w/MEGA Side Imaging

Standard Package: w/Mercury® 250 L Pro XS® FourStroke w/Torque Master & Custom Trailer (plus freight & prep) **\$69,995**

Optional Motor:
300 L Pro XS® FourStroke w/Torque Master\$73,405
(plus freight & prep)

- The Z2i Elite LX package features most of the upgrades from the Pro package, plus the most advanced fishing electronics from Lowrance®—enabling the NITRO®-exclusive Z-TOUCH™ Command Center for touchscreen control of all boat functions.
- Z-TOUCH™ Command Center w/digital control of boat functions
 - Bow Lowrance® HDS LIVE 12 gimbal-mounted fishfinder w/downscan transducer on trolling motor
 - Console Lowrance® HDS LIVE 16 flush-mounted fishfinder w/HD transducer (2D puck in hull at transom)

MAXIMIZE THE ADRENALINE

Z20

The NITRO® Z20 is a top-seller because its performance compares favorably with the Z21 while being more compact for probing docks and shallower water. The basis of the Z20 is the NITRO VORTEX TECHNOLOGY™ (NVT™) hull—a design that uses a series of parabolic curves for quicker holeshots, more lift while on plane and improved handling. The Z20 is optimized for tournament angling, with massive rod capacity in the two 8' bow rod lockers and an enormous center tackle storage compartment with NITRO-exclusive TACKLE MANAGEMENT SYSTEM™.



"My NITRO delivers championship-grade fishability every day at every tournament, no matter the conditions. The reliability, performance and storage layout are second to none."

Edwin Evers

EDWIN EVERS
NITRO® PRO ANGLER
2019 MLF REDCREST CHAMPION

Z20



SCAN
TO LEARN MORE
AT [NITROBOATS.COM](https://nitroboats.com)

Z20

SPECIFICATIONS:

Hull Length
20' 2"

Beam
7' 10"

Transom Height
22"

Max. HP
250

Max. Person Capacity
4/575 lbs.

Fuel Capacity
50 gal.

Max. Weight Capacity
1,750 lbs.

Storage Length / Width
23' 8" / 8' 6"



STANDARD PACKAGE:

w/Mercury® 225 L Pro XS® FourStroke
w/Torque Master & Custom Trailer
(plus freight & prep)

\$45,815

OPTIONAL MOTOR:

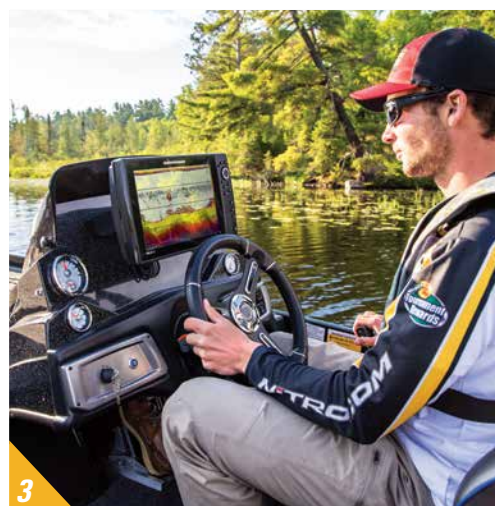
250 L Pro XS® FourStroke w/Torque Master\$46,995
(plus freight & prep)



1. Oversized lockable bow center storage locker w/TACKLE MANAGEMENT SYSTEM™ & piston-assist lift



2. Two NITRO-exclusive 19-gal. aerated, recirculated GUARDIAN™ livewells w/pump-outs



3. Modular, aerodynamic console design w/expansive leg clearance & large fishfinder surface



4. NEW center storage step with dedicated phone holder

Z20PRO

Standard Package: w/Mercury® 225 L
Pro XS® FourStroke w/Torque Master
& Custom Trailer (plus freight & prep)

\$52,815

Optional Motor:

250 L Pro XS® FourStroke w/Torque Master\$53,995
(plus freight & prep)

Professional Tournament Features Include:

- Bow Humminbird® HELIX™ 9 DI G3N & console HELIX 10 SI G3N fishfinders
- 2 Minn Kota® 10' Talon shallow-water anchors
- Minn Kota® Ultrex® 36V, 112-lb., 45" trolling motor w/MDI (MEGA Down Imaging) & i-Pilot® Link™
- 3-way Ethernet communication between fishfinders & trolling motor
- Power-adjust pneumatic lumbar support for driver's seat
- Hot Foot™ throttle & Pro-Trim lever
- 4-bank, 40-amp battery charger

PRECISION & POWER

ALL-NEW Z19

At 19' 4" and with 200HP standard, the NITRO® Z19 is fast enough for the most demanding tournament anglers and nimble enough to get into places where bigger, heavier boats can't. This is thanks in part to our exclusive NITRO VORTEX TECHNOLOGY™ (NVT™) hull, which improves holeshot, acceleration and overall performance. The Z-CORE™ seating system with Force Flex suspension provides industry-leading comfort, and it's factory-rigged with a Mercury® outboard, Minn Kota® trolling motor, Lowrance® fishfinder and a custom-matched trailer.



"The NITRO Z19 fits that 200-horse sweet spot just right—it's a very fast, extremely fishable boat that can take you right to the top of the leaderboard."

OTT DEFOE
NITRO® PRO ANGLER
2019 BASSMASTER CLASSIC® CHAMPION



ALL-NEW Z19



SCAN
TO LEARN MORE
AT [NITROBOATS.COM](https://nitroboats.com)

Z19

SPECIFICATIONS:

Hull Length
19' 4"

Beam
7' 10"

Transom Height
23"

Max. HP
200

Max. Person Capacity
4/500 lbs.

Fuel Capacity
50 gal.

Max. Weight Capacity
1,375 lbs.

Storage Length / Width
22' 7" / 8' 6"



STANDARD PACKAGE:

w/Mercury® 200 L Pro XS® FourStroke
& Custom Trailer
(plus freight & prep)

\$40,795



1



2



3



4

1. **NEW** center storage step with dedicated phone holder 2. Integrated net stow for fast, easy access 3. Exclusive culling system bracket keeps cull tags close at hand

4. Modular, aerodynamic console design w/expansive leg clearance & large graph surface

Z19 PRO

Standard Package: w/Mercury® 200 L Pro XS® FourStroke & Custom Trailer
(plus freight & prep)

\$44,995

Professional Tournament Features Include:

- Bow Humminbird® HELIX™ 8 DI G3N & console HELIX 8 SI G3N fishfinders
- Minn Kota® Ultrex® 24V, 80-lb. thrust, 45" shaft trolling motor w/MDI (MEGA Down Imaging) & i-Pilot® Link™
- 3-way Ethernet communication between fishfinders & trolling motor
- T-H Marine G-Force Conservation livewell culling system
- Upgraded tandem-axle trailer w/boarding step, steel fender, custom 14" aluminum wheels & spare tire

AMERICA'S FAVORITE FIBERGLASS BASS BOAT Z18

The NITRO® Z18 is America's best-selling fiberglass bass boat because it balances power and fishability in a ready-to-win package. It's built around our revolutionary NVT™ hull with RAPID PLANING SYSTEM™, giving you a smooth, soft and dry ride along with a brisk holeshot and precision handling. The massive bow deck is laid out with one purpose—catching fish. With a 24-volt Minn Kota® trolling motor standard and our ultra-comfortable Z-CORE™ driver, passenger and fishing seats, it really is a bass boat for everyone.



"The Z18 is the most popular fiberglass bass boat in America because it provides the perfect balance of fishability, performance and ease of ownership."

Timmy Horton

TIMMY HORTON
NITRO® PRO ANGLER
HOST OF TV SHOW TIMMY HORTON OUTDOORS



Z18



SCAN
TO LEARN MORE
AT [NITROBOATS.COM](https://nitroboats.com)

Z18

SPECIFICATIONS:

Hull Length
18' 8"

Beam
7' 10"

Transom Height
22.5"

Max. HP
175

Max. Person Capacity
4/550 lbs.

Fuel Capacity
40 gal.

Max. Weight Capacity
1,350 lbs.

Storage Length / Width
21' 3" / 8' 6"



STANDARD PACKAGE:

w/Mercury® 150 L Pro XS® FourStroke
& Custom Trailer
(plus freight & prep)

\$33,595

OPTIONAL MOTOR:

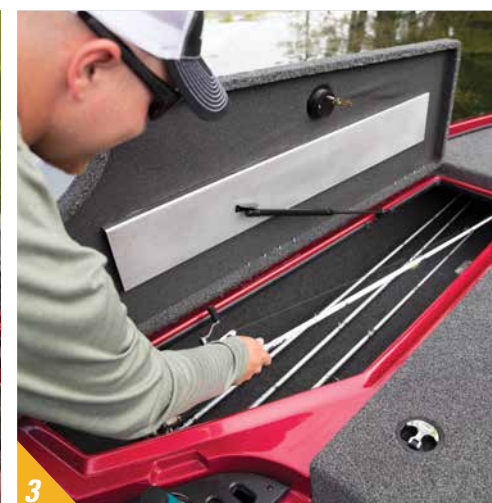
175 L Pro XS® FourStroke (limited availability)\$35,325
(plus freight & prep)



1



2



3



4

1. Aft 30-gal. insulated, aerated GUARDIAN™ livewell w/digital timer & baffled rim for reduced slosh 2. Oversized lockable bow center storage locker w/piston-assist lid
3. Oversized, lockable bow port & starboard rod lockers w/lift assists for rods up to 8'

4. Modular, aerodynamic console design w/expansive leg clearance & large graph surface
(shown with optional Humminbird® fishfinder upgrade)

Z18 PRO

Standard Package: w/Mercury® 150 L
Pro XS® FourStroke & Custom Trailer
(plus freight & prep)

\$36,995

Optional Motor:

175 L Pro XS® FourStroke\$38,725
(plus freight & prep)

Professional Tournament Features Include:

- Bow Humminbird® HELIX™ 7 DI G3N & console HELIX 7 SI G3N fishfinders
- Minn Kota® Ultrex® 24V, 80-lb. thrust, 45" shaft trolling motor w/MDI (MEGA Down Imaging) & i-Pilot® Link™
- 3-way Ethernet communication between bow & console fishfinders
- & trolling motor
- Factory-applied keel protector
- Bow tool/drink holder
- 3-bank, 30-amp battery charger
- Retractable transom trailer tie downs

Z17



Z17

SPECIFICATIONS:

Hull Length	17' 4"
Beam	7' 6"
Transom Height	20.5"
Max. HP	115
Max. Person Capacity	3/460 lbs.
Fuel Capacity	24 gal.
Max. Weight Capacity	1,100 lbs.
Storage Length / Width	20' 9" / 7' 11.5"



STANDARD PACKAGE:

w/Mercury® 115 ELPT Pro XS® FourStroke
& Custom Trailer
(plus freight & prep)

\$27,595

OPTIONAL MOTOR:

115 ELPT Pro XS® FourStroke Command Thrust.....\$28,145
(plus freight & prep)



SCAN
TO LEARN MORE
AT [NITROBOATS.COM](https://www.nitroboats.com)



1



2



3



4

DESIGNED TO PUT YOU ON THE FISH

The NITRO® Z17 is a compact, high-performance boat that's easy to own and even easier to fish. If you're thinking about stepping up from aluminum to fiberglass, you won't find a better, more value-packed choice. It shares many features with the larger boats in the Z Series, including the NITRO VORTEX TECHNOLOGY™ hull, a large insulated cooler, lockable port and starboard bow rod lockers, a GUARDIAN™ livewell, roomy tackle storage throughout and a handy passenger rod ramp.

1. Driver & passenger bucket seats w/molded-in, gelcoated storage below each 2. Minn Kota® Edge® 12V, 55-lb. thrust, 45" shaft foot-control trolling motor
3. Custom-molded modular console w/2-tone gelcoat w/Lowrance® HOOK® 4x fishfinder

4. 2 lift-out, molded aft storage boxes that will each accept seven 3700 tackle trays

Boats may be shown with optional equipment and accessories. Complete motor, feature and specification information available at [Nitroboats.com](https://www.nitroboats.com)

Z19 SPORT



**Z19
SPORT**

SPECIFICATIONS:

Hull Length
19' 5"

Beam
7' 9"

Transom Height
22"

Max. HP
200

Max. Person Capacity
5/750 lbs.

Fuel Capacity
26 gal.

Max. Weight Capacity
1,700 lbs.

Storage Length / Width
21' 8" 3"



STANDARD PACKAGE:

w/Mercury® 150 L FourStroke
& Custom Trailer
(plus freight & prep)

\$34,085

OPTIONAL MOTORS:

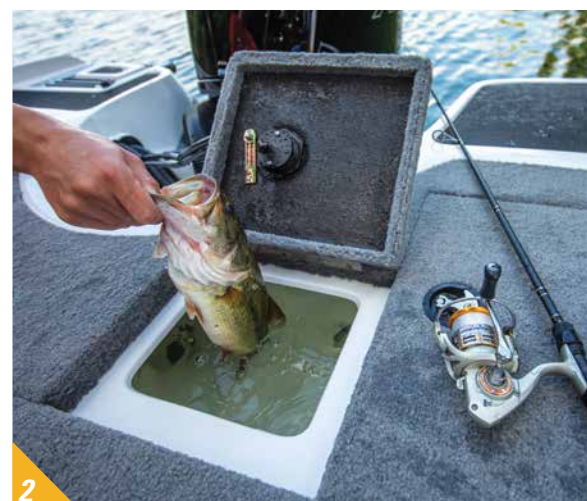
150 L Pro XS® FourStroke\$34,995
200 L Pro XS® FourStroke\$38,175
(plus freight & prep)



SCAN
TO LEARN MORE
AT [NITROBOATS.COM](https://www.nitroboats.com)



1



2



3



4

PRO PERFORMANCE FAMILY FUNCTIONALITY.

Add another facet of fun to your family's on-the-water time with the NITRO® Z19 Sport! With a protective walk-thru windshield, interior LED lighting, 16-gallon livewell, removable ski tow pylon, Lowrance fishfinder, aft swim platforms and roomy storage throughout, it has something for everyone in the family from the giggling tuber to the crappie angler. And with 200 max horsepower capacity, it has the power to handle tournament competition, too.

1. 2 convertible & removable fishing seats 2. Aft 16-gal. rotomolded & aerated livewell w/timer, pump-out system & rounded corners 3. Aft swim platforms w/starboard boarding ladder & removable ski tow pylon

4. Radiused walk-thru, tempered-glass windshield

Boats may be shown with optional equipment and accessories. Complete motor, feature and specification information available at [Nitroboats.com](https://www.nitroboats.com)

BUILT FOR BIG WATER



The ZV21 is the big-water beast you've been searching for—it's an ideal boat for diehard northern anglers and families, too!

Gary Parsons

GARY PARSONS
NITRO® PRO ANGLER
CO-HOST OF TV SHOW *THE NEXT BITE*



ZV21

Built to give you the tools to compete in Great Lakes conditions, the ZV21 can do just about anything. It features a 5" touchscreen with one-touch command of boat controls—including the innovative First Fish function, which fills and recirculates the livewell with one touch. A handy key fob controls many of the same functions. And for the sprint back to shore, you'll be powered by up to 400 horses leading the charge. So when it comes to the biggest, baddest walleye lakes of the north, choose the ZV21.

ZV21



ZV21

SPECIFICATIONS:

Hull Length
21' 7"

Beam
8' 4"

Transom Height
28"

Max. HP
400

Max. Person Capacity
6/1,200 lbs.

Fuel Capacity
64 gal.

Max. Weight Capacity
2,500 lbs.

Storage Length / Width
24' 7" / 8' 6"



STANDARD PACKAGE:

w/Mercury® 250 XL Verado® FourStroke
& Custom Trailer
(plus freight & prep)

\$61,995

OPTIONAL MOTORS:

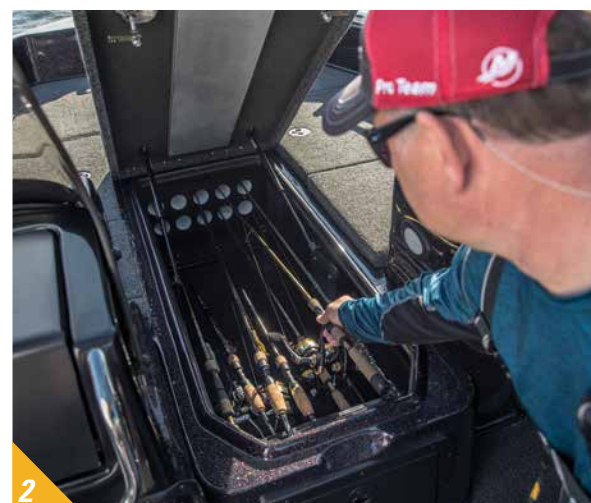
300 XL Verado® FourStroke	\$63,965
350 XL Verado®	\$66,595
400 XL Verado®	\$70,800
(plus freight & prep)	



SCAN
TO LEARN MORE
AT [NITROBOATS.COM](https://nitroboats.com)



1. Touchscreen switch panel w/1-touch boat controls including First Fish, Nite Mode, lighting, bilge, livewells & more



ZV21PRO

Standard Package: w/Mercury® 250
XL Verado FourStroke & Custom Trailer
(plus freight & prep)

\$72,195

Optional Motor:

300 XL Verado® FourStroke	\$74,165
350 XL Verado®	\$76,795
400 XL Verado®	\$81,000
(plus freight & prep)	

Professional Tournament Features Include:

- NEW bow Humminbird® SOLIX™ 10 DI G2 & NEW console SOLIX 12 SI G2 RAM®-mounted fishfinders w/GPSNEW
- Minn Kota® Ulterra™ 36V, 112-lb., 72" trolling motor w/MDI (MEGA Down Imaging) & i-Pilot® Link™
- Mercury® 9.9 remote ProKicker trolling outboard
- 3-way Ethernet communication between fishfinders & trolling motor
- Walk-thru windshield (or optional plexiglass windscreens)

MULTISPECIES SPECIALIST



"The NITRO ZV20 checks all the boxes for a tournament walleye angler like me—plus adds some special features for the whole family."

Chase Parsons

CHASE PARSONS

NITRO® PRO ANGLER
CO-HOST OF TV SHOW *THE NEXT BITE*

ZV20

The NITRO® ZV20 is a formidable 300-horsepower-class Deep V fishing machine with the brute strength and fishability you need to conquer big water. It features 5" touchscreen command of boat controls—including the innovative First Fish function, which fills and recirculates the livewell with one touch. A handy key fob controls many of the same functions. Built with crucial input from our walleye pros, the ZV20 is designed to find and catch walleye, but it pulls in some great family features as well.

ZV20



ZV20

SPECIFICATIONS:

Hull Length	20' 2"
Beam	8' 4"
Transom Height	26"
Max. HP	300
Max. Person Capacity	6/1,100 lbs.
Fuel Capacity	55 gal.
Max. Weight Capacity	2,200 lbs.
Storage Length / Width	24' 1" / 8' 6"



STANDARD PACKAGE:

w/Mercury® 225 XL Pro XS® FourStroke w/DTS & Custom Trailer (plus freight & prep)

\$57,795

OPTIONAL MOTOR:

250 XL Pro XS® FourStroke w/DTS	\$59,455
300 XL Pro XS® FourStroke w/DTS	\$61,995 (plus freight & prep)



1. Attwood® Centric X folding molded fishing seat w/hydraulic pedestal **2.** Touchscreen switch panel w/1-touch boat controls including First Fish, Nite Mode, lighting, bilge, livewells & more **3.** Deep V NVT™ performance hull w/RAPID PLANING SYSTEM™ (RPS™) transom

4. Bow 10-gal. insulated baitwell w/removable bucket

ZV20 PRO

Standard Package: w/Mercury® 225 XL Pro XS® FourStroke w/ DTS & Custom Trailer (plus freight & prep)

\$66,795

Optional Motor:

250 XL Pro XS® FourStroke w/DTS	\$68,455
300 XL Pro XS® FourStroke w/DTS	\$70,995 (plus freight & prep)

Professional Tournament Features Include:

- Bow Humminbird® HELIX™ 9 DI G3N & console HELIX 10 SI G3N fishfinders
- NEW Minn Kota® Ulterra™ 36V, 112-lb. thrust, 72" shaft trolling motor w/MDI (MEGA Down Imaging) & i-Pilot® Link™
- Mercury® 9.9 remote ProKicker trolling outboard
- 3-way Ethernet communication between fishfinders & trolling motor
- Walk-thru windshield (or optional plexiglass windscreens)

ALL-WATER VERSATILITY



ZV19

The NITRO® ZV19 is a hardcore, overbuilt fishing machine with a maximum 225HP capacity, created with input from the world's top walleye anglers. The deep, comfortable interior keeps fearless anglers secure in rough weather and families safe when cruising. The aggressive Deep V hull slices through the chop on big lakes with smooth agility, and its wide beam provides plenty of stability for six anglers to move around the deck with confidence. It sports a list of fishing features that will please the pike, muskie, bass or walleye angler.

ZV19




SCAN
TO LEARN MORE
AT NITROBOATS.COM

ZV19

SPECIFICATIONS:

Hull Length
18' 11"

Beam
8' 6"

Transom Height
25"

Max. HP
225

Max. Person Capacity
6/1,050 lbs

Fuel Capacity
45 gal.

Max. Weight Capacity
2000 lbs.

Storage Length / Width
22' 7" / 8' 6"



STANDARD PACKAGE:

w/Mercury® 200 XL Pro XS® FourStroke
w/DTS & Custom Trailer
(plus freight & prep)

\$48,995

OPTIONAL MOTOR:

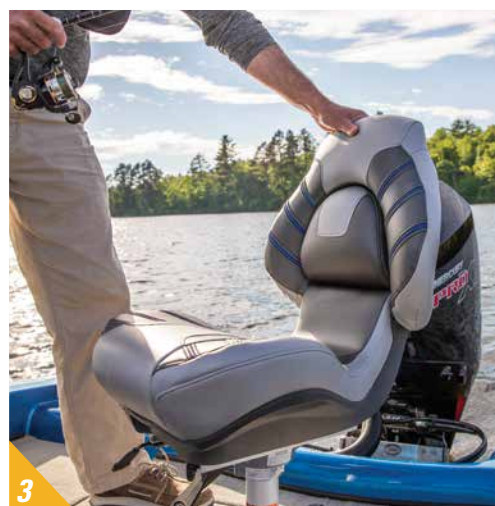
225 XL Pro XS® FourStroke w/DTS.....\$50,915
(plus freight & prep)



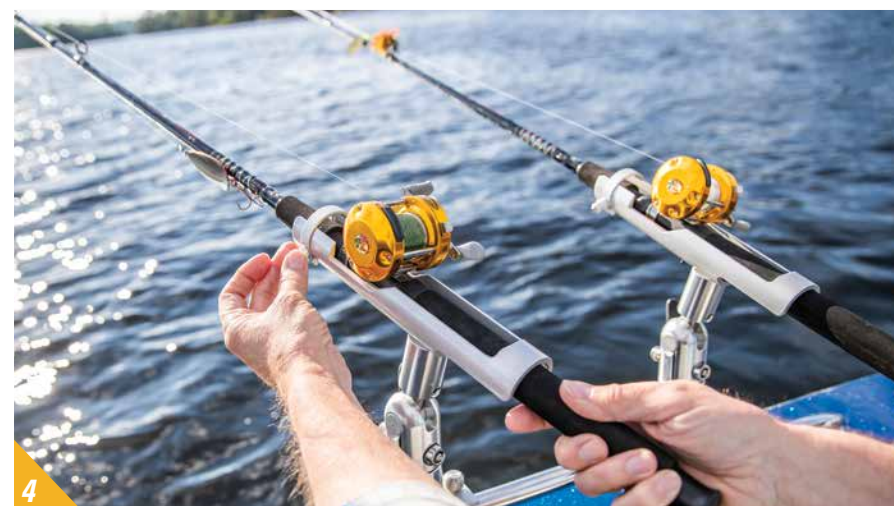
1



2



3



4

1. 3-level center rod locker w/organizers for rods up to 8' plus passenger rod ramp 2. 26-gal. aft NITRO®-exclusive GUARDIAN™ livewell & 5.5-gal. bow baitwell w/bucket
3. Attwood® Centric X driver, passenger, fishing & bike seats w/shock-dampening core

4. Rear handrails permit rock-solid mounting of accessories such as rod holders

ZV19 PRO

Standard Package: w/Mercury® 200 XL
Pro XS® FourStroke w/DTS
& Custom Trailer (plus freight & prep)

\$53,995

Optional Motor:

225 XL Pro XS® FourStroke w/DTS.....\$55,915
(plus freight & prep)

Professional Tournament Features Include:

- Bow Humminbird® HELIX™ 9 DI G3N & console HELIX 10 SI G3N fishfinders
- Minn Kota® Ulterra™ 36V, 112-lb. thrust, 72" shaft trolling motor w/MDI (MEGA Down Imaging) & i-Pilot® Link™
- 3-way Ethernet communication between fishfinders & trolling motor
- Walk-thru windshield (or optional plexiglass windscreens)
- KICKER® KMC1 Bluetooth®-capable stereo system

NEVERENDING FAMILY FISHING & FUN



ZV19
SPORT

The NITRO® ZV19 Sport is a dry-riding, safe and secure multispecies fishing and fun machine with max outboard power of 225HP. Two folding jump seats integrated into the aft deck and a stowable ski tow pylon provide fun for all, plus the deep, comfortable interior keeps tournament anglers secure in rough weather and families safe when cruising. Combined with the durability and reliability NITRO is known for, it's the boat of choice for lake-loving families.

ZviS SPORT



ZviS SPORT

SPECIFICATIONS:

Hull Length	18' 11"
Beam	8' 6"
Transom Height	25"
Max. HP	225
Max. Person Capacity	6/1,050 lbs.
Fuel Capacity	45 gal.
Max. Weight Capacity	2,000 lbs.
Storage Length / Width	22' 7" / 8' 6"



STANDARD PACKAGE:

w/Mercury® 150 XL Pro XS®
FourStroke & Custom Trailer
(plus freight & prep)

\$43,995

OPTIONAL MOTOR:

200 XL FourStroke w/DTS	\$48,750
200 XL Pro XS® FourStroke w/DTS.....	\$49,650
225 XL Pro XS® FourStroke w/DTS.....	\$51,570
(plus freight & prep)	



SCAN
TO LEARN MORE
AT [NITROBOATS.COM](https://nitroboats.com)



1. Attwood® Centric X driver & passenger seats



2. Stowable ski tow pylon & 2 jump seats in aft deck



3. Fold-down 4-step stainless steel reboarding ladder



4. Port & starboard consoles w/2-tone gelcoat scheme (optional walk-thru windshield shown)

ZviS PRO SPORT

Standard Package: w/Mercury® 200 XL
FourStroke w/DTS & Custom Trailer
(plus freight & prep)

\$55,995

Optional Motor:

200 XL Pro XS® FourStroke w/DTS.....	\$56,895
225 XL Pro XS® FourStroke w/DTS.....	\$58,815
(plus freight & prep)	

Professional Tournament Features Include:

- Bow Humminbird® HELIX™ 9 DI G3N & console HELIX 10 SI G3N fishfinders
- Minn Kota® Ulterra™ 36V, 112-lb. thrust, 72" shaft trolling motor w/MDI (MEGA Down Imaging) & i-Pilot® Link™
- 3-way Ethernet communication between fishfinders & trolling motor
- Bimini top
- Walk-thru windshield (or optional plexiglass windscreens)
- Factory-applied keel protector
- KICKER® KMC1 Bluetooth®-capable stereo system

CUSTOM-MATCHED TRAILERS

UNMATCHED QUALITY OF CONSTRUCTION

Every NITRO® trailer is built from heavy-duty steel tubing protected with our exclusive GALVASHIELD® Impact corrosion and chip protection—a thick, baked on powdercoat finish that shields your trailer from the road and the water. This results in an extremely durable finish for maximum longevity through many trips to the lake, covered by the industry-leading warranty protection (3 years) against failure due to corrosion.

COLD-FORMED STEEL
FOR EXTRA STRENGTH

GALVANIZED (ZINC COATED)
INSIDE & OUT

CONVERSION COAT FOR
SUPERIOR ADHESION

GALVASHIELD IMPACT
POWDER-COAT FINISH
CHIP PROTECTION

Other features include radial tires, an outboard motor support, safety winch strap on the heavy-duty winch, swing-away tongue, low-maintenance hubs, safety cables, pivoting tongue jack and more. So, when you're ready to leave home and head to the water, your NITRO boat package is too!



GALVASHIELD Impact powdercoat finish for improved corrosion & chip protection



Trailer tongue storage box

CUSTOM WHEELS

Select models are available with an 18" custom matte Black aluminum alloy or Silver wheel upgrade with Hercules RAPTIS® R-T5 tires. Fiberglass fenders are required for wheel upgrades.



Matte Black



Silver

NO TOUCH VORTEX HUBS W/6-YEAR, 100,000-MILE WARRANTY

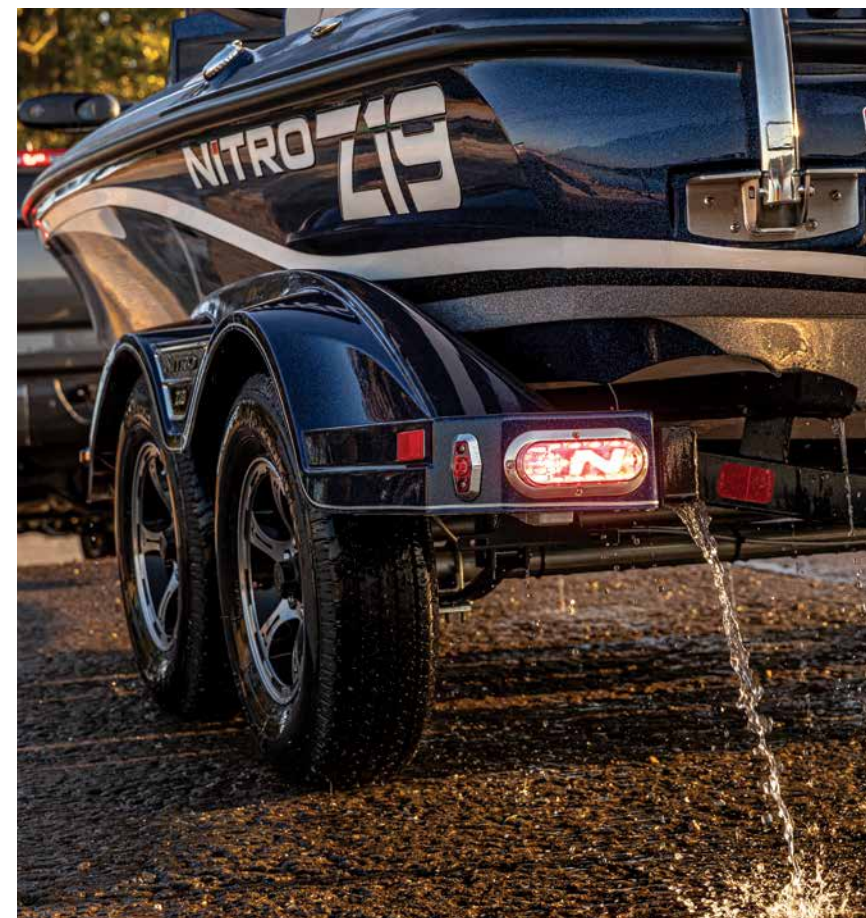
All NITRO® trailers come with our No Touch Vortex hub lubrication system, so you no longer need to re-grease or inspect your hubs! These hubs feature a lithium complex fortified with rust and oxidation inhibitors, high-pressure additives and great water resistance. They are also covered by a 100,000-mile or 6-year warranty!

WE'VE GOT YOU COVERED

Protecting your boat in storage and on the road is serious business, and that's why we offer the toughest, highest-quality boat covers to secure your investment. Heavy-duty, solution-dyed polyester is water resistant and breathable to allow moisture to escape. Ratcheting covers feature pockets to keep strap hardware secure, and UV-protected materials guarantee long life whether you park your boat in or beside the garage.



Covers available may vary.



Submersible, angled LED backup lights for long life & improved visibility

NITRO COLORS

VIEW ALL COLOR COMBINATIONS & BUILD YOUR BOAT AT NITRO.COM

NITRO® gelcoat is applied in multiple layers at precise thicknesses by skilled technicians, and the result is a lustrous, highly durable finish that will dazzle onlookers—and last for a lifetime. Choose from a large range of custom colors to make your boat stand out at the lake.

Configurations include popular Premium 3-Color, Elite 4-Color and fully customized colors. Literally hundreds of combinations are possible, and our color selector tool online at NITRO.COM will let you see a preview of what your new boat will look like!

Z SERIES PREMIUM 3-COLOR COMBOS*

STANDARD ON: Z18, Z19, Z20 & Z21. MORE OPTIONS AVAILABLE AT [NITRO.COM](#).



COLOR NO. PR10



COLOR NO. PR124



COLOR NO. PR123



COLOR NO. PR107

*SEE Z17 COLOR OPTIONS AT [NITRO.COM](#)

Z SERIES ELITE 4-COLOR COMBOS

OPTIONAL ON: Z18, Z19, Z20 & Z21. MORE OPTIONS AVAILABLE AT [NITRO.COM](#).



COLOR NO. EL144



COLOR NO. EL100



COLOR NO. EL148



COLOR NO. EL119



COLOR NO. EL147



COLOR NO. EL134

Z SPORT COLORS

MORE OPTIONS AVAILABLE AT [NITRO.COM](#).



COLOR NO. SP11



COLOR NO. SP19

CUSTOM COLORS

GRAPHIC

BLACK/CHROME

Z20

WHITE/BLACK

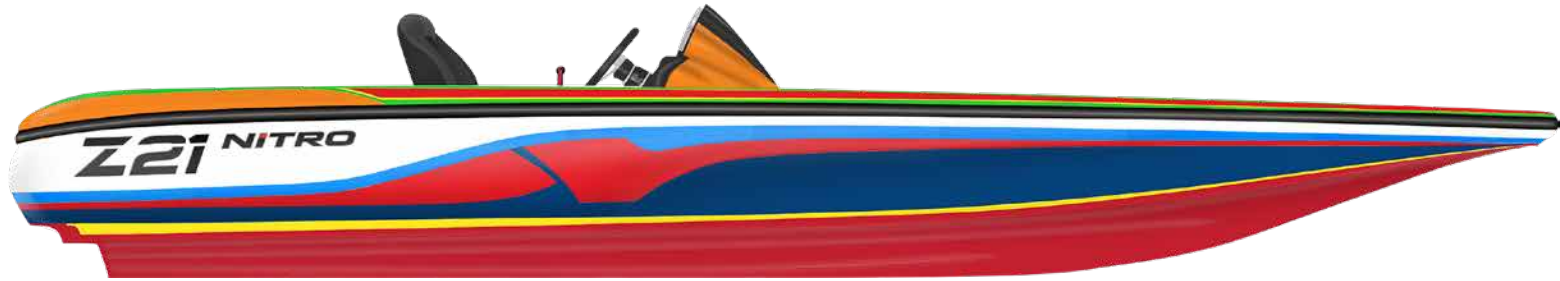
Z20

DECK

- ACCENT
- MAIN
- SECOND ACCENT
- PINSTRIPES
- CONSOLE

HULL

- UPPER MAIN
- ACCENT - N
- SECOND ACCENT
- FORWARD LOWER MAIN
- BOOT STRIPE
- BOTTOM



INTERIOR

- PRIMARY VINYL
- ACCENT VINYL
- SECOND ACCENT VINYL
- ACCENT WELT

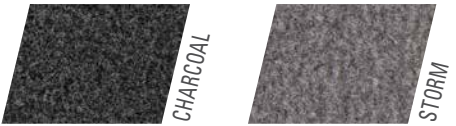


TRAILER

- FRAME
- FENDER
- PINSTRIPES

CARPET

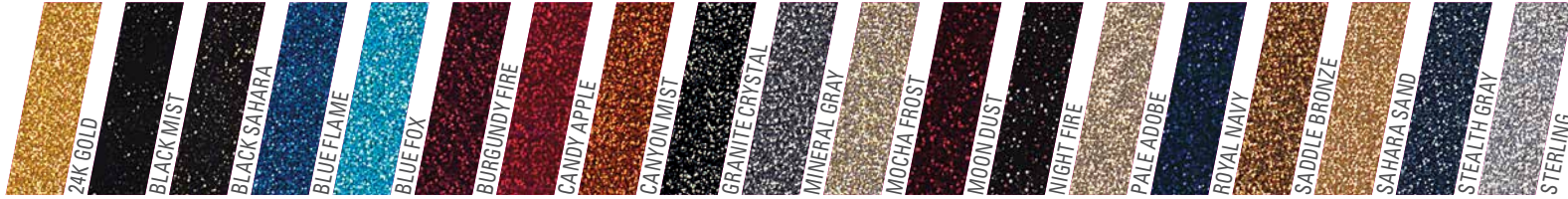
NITRO® Premium 3-Color and Elite 4-Color boats come with preselected, matching carpet. Custom color boats come with your choice. See your dealer for details.



GELCOAT



POLYFLAKE



CUSTOMIZE YOUR BOAT TODAY

CHOOSE FROM HUNDREDS OF CUSTOM COLOR COMBINATIONS AT [NITRO.COM](#).



NITRO COLORS

VIEW ALL COLOR COMBINATIONS & BUILD YOUR BOAT AT NITRO.COM

NITRO® gelcoat is applied in multiple layers at precise thicknesses by skilled technicians, and the result is a lustrous, highly durable finish that will dazzle onlookers—and last for a lifetime. Choose from a large range of custom colors to make your boat stand out at the lake.

Configurations include popular Premium 3-Color, Elite 4-Color and fully customized colors. Literally hundreds of combinations are possible, and our color selector tool online at NITRO.COM will let you see a preview of what your new boat will look like!

ZV SERIES PREMIUM 3-COLOR COMBOS

MORE OPTIONS AVAILABLE AT [NITRO.COM](#).



COLOR NO. ZVPR100



COLOR NO. ZVPR101

ZV SERIES ELITE 4-COLOR COMBOS

MORE OPTIONS AVAILABLE AT [NITRO.COM](#).



COLOR NO. ZVEL101



COLOR NO. ZVEL109



COLOR NO. ZVEL130



COLOR NO. ZVEL131



COLOR NO. ZVEL146



COLOR NO. ZVEL111



COLOR NO. ZVEL143



COLOR NO. ZVEL132

CUSTOM COLORS

GRAPHIC

BLACK/CHROME

ZV21 NITRO

WHITE/BLACK

ZV21 NITRO

BLACK/GOLD

ZV21 NITRO

WHITE/GOLD

ZV21 NITRO

DECK

- MAIN
- INSET
- PINSTRIPE
- CONSOLE

HULL

- UPPER MAIN
- ACCENT - N
- SECOND ACCENT
- FORWARD LOWER MAIN
- BOOT STRIPE
- BOTTOM



INTERIOR

- PRIMARY VINYL
- ACCENT VINYL
- SECOND ACCENT VINYL
- ACCENT WELT



TRAILER

- FRAME
- FENDER
- PINSTRIPE

CARPET

NITRO® Premium 3-Color and Elite 4-Color boats come with preselected, matching carpet. Custom color boats come with your choice. See your dealer for details.



GELCOAT



POLYFLAKE



LIMITED LIFETIME WARRANTY

YOUR BOAT IS PROTECTED FOR YOUR PEACE OF MIND

NITRO® Boats is dedicated to ensuring you enjoy peace of mind for all your fishing adventures. In addition to using only the best processes to craft boats that will take you through some of the harshest conditions, we back every model with one of the best factory warranties in the industry. Each boat comes with our transferable warranty that covers the hull, interior stringers and transom for the life of the boat. And they all come with a limited one-year warranty on factory installed components.

FREIGHT & PREP

The prices in this brochure are listed "Plus freight & prep." Freight charges are the cost of shipping the boat from the factory to the dealer. NITRO® uses zoned freight rates that reflect the costs of shipping boats to each geographic area, or zone, in North America. Prep charges cover the costs the dealer incurs for labor and supplies necessary to complete a pre-delivery inspection and prepare the boat for delivery to the customer. Freight and prep charges are set by the factory and added to the price of boats shown in this brochure and on our websites, based on the dealer location selected by the customer.

Model	Zone 1	Zone 2	Zone 3 (Canada)	Zone 4 (Alaska)	Zone 5	Prep
Z17, Z18, Z19, Z20, Z21, Z19 Sport	\$950	\$1,000	\$1,250	\$4,300	\$1,050	\$495
ZV19, ZV20, ZV21, ZV19 Sport	\$1,125	\$1,175	\$1,400	\$5,100	\$1,225	\$495

STANDARD GEAR & OPTIONS FROM OUR TRUSTED PARTNERS

To ensure that your NITRO® provides industry-leading value and maximum fishability, we pack it full of products from the leaders in the fishing industry. Unlike many tournament-level fishing boats, every NITRO comes with the trolling motor, fishfinder, outboard and trailer included in the price—and we

offer a long list of upgrades from the top players in the game to outfit your boat the way you want. The quality and reliability of our partners' products is proven and undeniable, ready to provide you with years of tourney fishing or just battling your buddies on the weekend.



Mercury® Outboards

We offer Mercury FourStroke, Pro XS® and Verado® outboards to help power you to the top of the leaderboard.



Minn Kota® Trolling Motors

Minn Kota makes the toughest, most innovative trolling motors on the market—and we make them standard on all NITRO models.



Lowrance® Fishfinders

Founded in 1957, Lowrance was the first recreational fishfinder manufacturer.



NOCO® Genius Chargers

Standard NOCO waterproof battery chargers keep you powered up and ready to fish in the most demanding tournament conditions.



Power-Pole® Anchors

Rock-solid and fast-deploying Power-Pole shallow-water anchors keep you locked in place in up to 10' of water.

ADDITIONAL OPTIONS

We offer the same options that pros like Kevin VanDam and Edwin Evers use in their professional tournament careers. From the functional to the aesthetic to the protective, we've got everything you need to join the big leagues. No detail is omitted in our option availability, so that you can fish the way you want to, whatever level you choose to compete at.

Comprehensive option availability can be found at NITRO.COM



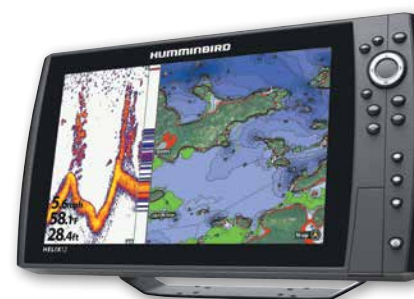
NITRO® Removable Port Console

Available on all Z Series boats. Easily removable by one person without tools.



Lowrance® Ghost Trolling Motors

The Lowrance Ghost freshwater trolling motor helps anglers fish longer, run faster, and move in closer without spooking fish.



Humminbird® Fishfinders

A leader in advanced marine electronics. We offer a range of Humminbird products.



Jack Plates

Add speed, stability and fuel economy with hydraulic or manual jack plates.



Bluetooth®-Capable Stereo

Stream tunes from your phone while you're chasing your next record.



Loc-R-Bar® Gear Protection

Provides an extra level of security for your expensive fishing tackle.



TRACKER Lithium Batteries

Lithium batteries have up to 10X the life of traditional batteries, as well as unparalleled efficiency and lighter weight.



Minn Kota® Talon Anchors

Stay on the fish when you find them with Minn Kota shallow-water anchors.



Hot Foot™ Throttle Control

Free up your throttle hand for easier control and better responsiveness.



Keel Protector

Protect your keel from scratches with a durable keel protector in Black or White.

THE RELENTLESS PURSUIT OF EXCELLENCE

At NITRO® Boats, our job is to build precision fishing machines that can make your fishing dreams into reality. We do so knowing that your boat is the most important tool in your angling arsenal. And we do so with the same passion you have—a love of the outdoors, of tradition, of family and of that feisty green fish on the end of your line. Because inside anyone that has ever fought and landed one resides a champion—this is why we design every NITRO boat to help you release the champion within.



We're constantly adding content online like fishing tips, outdoor events, amazing photos, special deals and more – and we invite you to share your memories with us on any of the social media channels below.



@NITROBOATS



NITRO

PERFORMANCE FISHING BOATS

2500 E. Kearney | Springfield, MO 65898-5048 U.S.A. ——— NITRO.COM

RELEASE THE CHAMPION WITHIN

Photos may show optional or special edition equipment available at an additional cost. Local taxes, license, registration and doc fees vary by state and are in addition to prices shown. Prices are approved by the manufacturer. Details in pricing, savings, features, promotions, services and product offerings may vary by location and are subject to change without notice. Void where prohibited by law. Best efforts are used to ensure the accuracy of our advertising, however, errors, inaccuracies or omissions may sometimes occur. We do not guarantee the accuracy or completeness of information. We reserve the right to correct any errors, inaccuracies or omissions at any time and to cancel any order with no further obligation to you. Applicable tariffs may affect final price. See your local dealer for complete information. Prices shown do not include dealer freight and prep charges, unless otherwise noted. F.O.B. Springfield, MO, USA. Prices shown are based on United States currency. © 2021 White River Marine Group, LLC 232979

Your Authorized NITRO® Boats Dealer



NITROBOATS



WEARENITROBOATS