

SPORTSCOACH



SPORTSCOACH



CoachmenRV.com

THE COACHMEN ADVANTAGE

What is the Coachmen advantage? It's the collection of unique features offered in a Coachmen motorhome to ensure a smoother ride, a better camping experience, and a motorhome that will last for years.

1. NOBLE SELECT™

Protected by a three-year warranty, these sidewalls have a high-gloss gelcoat finish to prevent fading. They are also 20% lighter than wood substrate sidewalls, provide more occupant cargo carrying capacity, and offer three times the insulation against extreme climates.

2. AZDEL™ COMPOSITE

Most manufacturers use wood sidewalls that can expand, swell, and eventually mold. We use Azdel. It's impervious to water, won't rot or mold, and, with less than a 1% chance of delaminating, it ensures the long-term integrity of the sidewalls.

3. REINFORCED LAMINATION

We vacuum bond and pinch roll every sidewall, floor, and roof, then perform a pull adhesion test. Most manufacturers just do one process or the other, but by doing both we improve the strength and longevity of the sidewalls.

4. FOREFRONT OF TECHNOLOGY

We offer the latest in technology by pairing electronics with smart phones. A safer and larger viewing area is achieved when dual-mirroring your smart phone GPS to the 10" Axxera dash radio and backup system. The MyRV OneControl app allows you to control electronics—including master lights, slide room, and awning—right from your phone. Wi Fi Ranger will help keep you connected in more remote areas.

5. SIGHT RITE DASH™

Our dashes are angled 20 degrees forward. This increases the line of sight for the driver, and offers the best road visibility on the market.

6. EVEN COOL DUCT™

Our patented duct system evenly disperses air through the whole coach. And we use Amaco ducting instead of Styrofoam because it's antimicrobial, preventing the growth of bacteria and ensuring a cool, clean coach in even scorching heat.

7. DIGITAL OWNER'S MANUAL

Our owner's manuals are easy to access through the Coachmen website or our free app. Supplemented with videos, PowerPoints, and more, it's got all you need to know about your coach.

EXTERIOR COLOR OPTIONS



Full Body Paint - Eventide



Full Body Paint - Siesta Key



Full Body Paint - Brandywine



Full Body Paint - Cimmaron

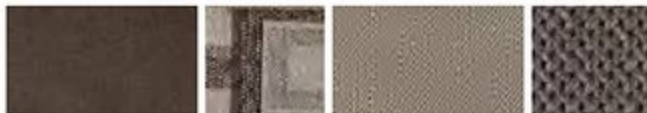
INTERIOR DECOR COLOR SELECTIONS



Monterey



Napa



Sonoma

INTERIOR WOOD COLOR SELECTIONS



Slate Cherry

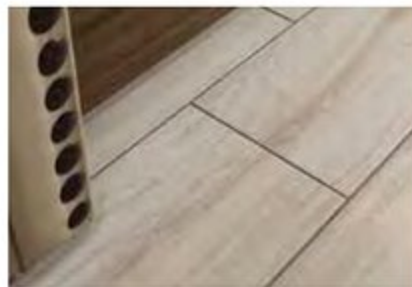
Driftwood

Sumatra

A LUXURY COACH, INSIDE AND OUT.



WHEN NOT TAKING IN BREATHTAKING VIEWS FROM THE GREAT OUTDOORS, FEAST YOUR EYES ON THE REMARKABLE INTERIOR VIEWS OF THE SPORTSCOACH – THE MOST AFFORDABLE DIESEL ON THE MARKET.



Whether you're preparing a meal or watching your favorite sporting event, Sportscoach has it all. From its tastefully appointed kitchen to the exterior LED TV, you'll want to show it off. Each floorplan is beautifully outfitted with tile flooring throughout and the 50th Anniversary Edition features our custom embroidered anniversary logo, black chrome: mirrors, headlight bezels, rims, rocker panels; LED ground effect lighting, cedar-lined closets and a custom chrome nameplate.



With a 360HP ISB Cummins rear diesel engine and a 6-speed Allison 3,000 MH automatic transmission, Sportscoach gets 800 lbs./ft. of torque and has a 10,000 pound towing capacity.

Sportscoach comes fully-equipped with an outdoor entertainment system, including an exterior LED TV.

Storage is plentiful in Sportscoach, including a pass-through full basement that's ideal for stowing oversized gear without compromising living space.

The super durable Tread Lite™ Double Power Step makes it easy to board and exit safely.



8.0KW Diesel generator with slide tray allows for easy access.



Photography features the Sportscoach 409BG floorplan with Napa decor and Sumatra cabinets.



Every Sportscoach is prepped and ready for a stackable washer/dryer so you'll always have fresh laundry.

Sportscoach's 409BG floorplan is one of few motorhomes to include two full bathrooms, both with stainless steel and porcelain touches making them easy to clean.

In the bedroom you'll find a king mattress with an elegant designer headboard, spacious wardrobe and an LED TV.

The Coach-Pap™ Station allows for storage of CPAP machines and other electronics, located in the cabinet above the bed.

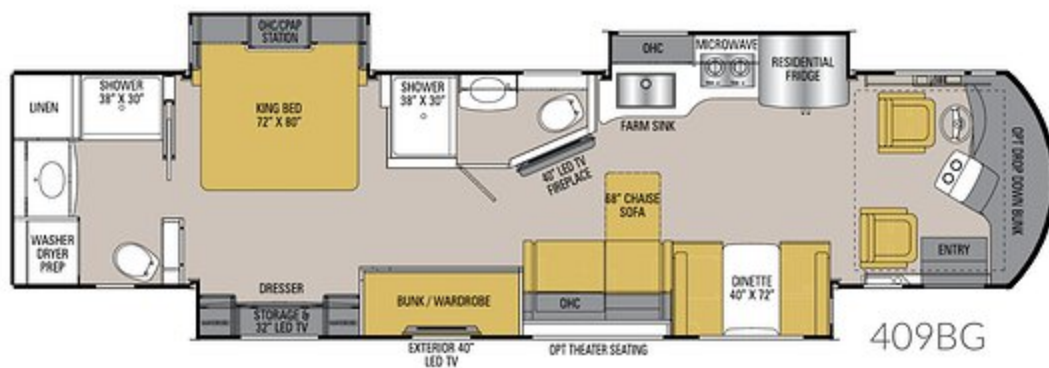
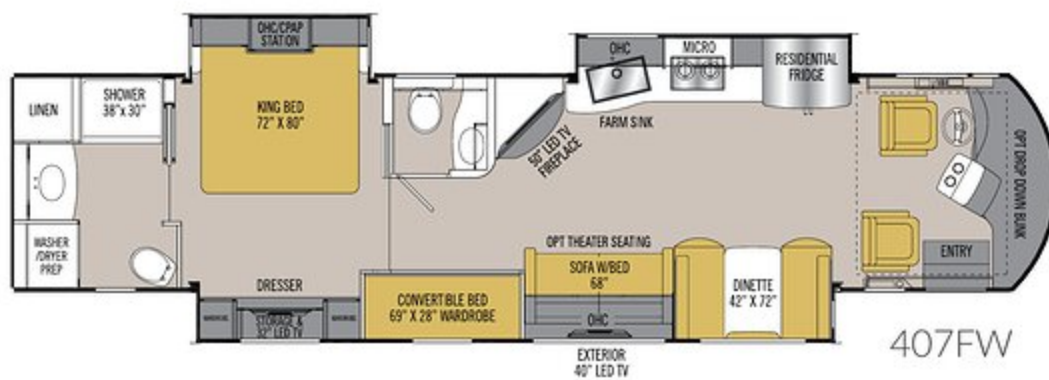
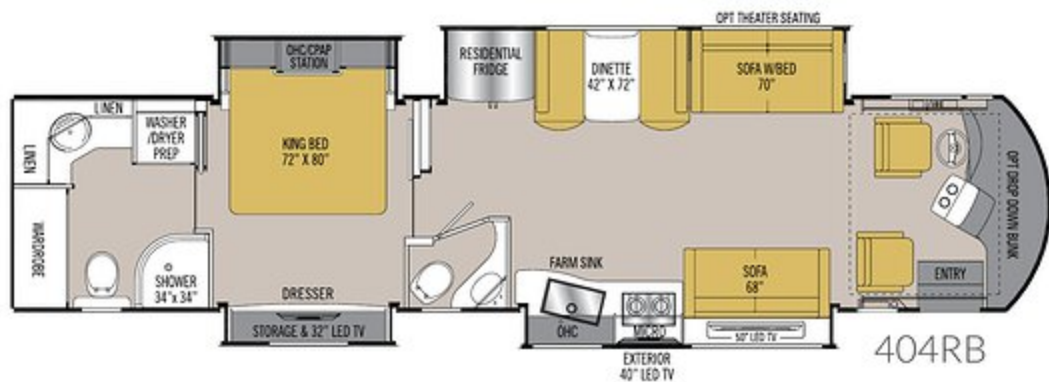
Spacious bunk beds (409BG, 407FW) have their own 13" TV and DVD player. The bunks also convert into a full wardrobe.

After a long, adventurous day, kick back and relax in front of the electric fireplace and 40" or 50" LED TV (depending on floorplan).



Sportscoach includes three floorplan options, so you'll have no trouble choosing the one that suits you perfectly.

FLOORPLANS



STANDARD FEATURES

INTERIOR APPOINTMENTS

Padded Vinyl Ceiling
Hardwood Cabinet Doors Throughout
Tile Floor Throughout
Self Closing Ball Bearing Drawer Guides Throughout
Brushed Nickel Hardware and Fixtures
Electric Step Cover
Power Front Privacy Shade and Manual Side Shades
6-Way Power Driver/Passenger Seats
Solar Privacy Shades Throughout
Faux Leather Visionary Sofa Hide-A-Bed (w/ 409BG)
Chaise Lounge Sofa (409BG only)
Dream Dinette
Storage Drawers under Booth Dinette
Solid Surface Countertops Throughout

INTERIOR EQUIPMENT

Fire Extinguisher
50" LED TV (404RB, 407FW)
40" LED TV (409BG)
Charging Station for Electronic Devices
King Jack TV Antenna
Pre-Wired for Satellite Dish and Blu-ray Players
Cable TV Jack
LP Leak Alarm
Smoke Detector
Carbon Monoxide Detector
10.1" Touch Screen Radio AM/FM
with Bluetooth, Dual Mirror Technology
and Camera Monitor
Fireplace (407FW, 409BG)
Stackable Washer/Dryer Ready
Three-Speed Roof Vent
Wi-Fi Ranger
Sound Bar Entertainment System

GALLEY

30" Stainless Steel OTR Convection Microwave
2-Burner Induction Cook Top
22 cu. ft. Stainless Steel Refrigerator
Tile Kitchen Back Splash
Fantastic Power Ceiling Vent
Solid Surface Sink Covers
Large Stainless Steel Sink
Pop-up Recept with USB Ports

BATH AND WATER

Whole Coach Water Filter*
Single Pedal Porcelain Toilet with Sprayer
Fiberglass Shower Stall*
Clear Glass Shower Door*
Power Bath Vent
Water Pump Switch at Termination
Demand Water Pump*
Black Tank Flush System
Skylight Over the Shower*
Winterization Inlet at Termination Compartment
Chair-Rail in Toilet Room
10-Gallon Gas/Electric E.I. Water Heater*

SLEEPING

King Bed 72W X 80L
Upgraded Mattress
Bedspread, Pillows with Shams
Residential Style Headboard
32" LED TV Bedroom
13" TV with DVD in Bunks (407FW, 409BG)
Coach-Pop™ Station
Bedroom Radio AM/FM/Bluetooth
with Outside Speakers

ELECTRICAL/HEATING/AC

My RV Multiplexing Control Center
50-Amp Power Cord
Two GFI Circuits (Kitchen & Bathroom)
Outside Receptacle (DS)
LED Interior Ceiling Lighting
Emergency Start Switch
Coach and Chassis Battery Disconnect
Auto Generator Start
Exterior LED Strip Light
13,500 BTU Ducted Roof A/C Front
13,500 BTU Ducted Roof A/C Rear
20-Gallon LP Tank
8.0KW Diesel Generator with Slide Tray
Power Control System
with Inverter Assist-120V
Automatic Transfer Switch
2000W Inverter with (4) Auxiliary Batteries
Solar Panel Hook-Up

AUTOMOTIVE/EXTERIOR

New Diesel Cockpit Dash Console
Raised Rail Freightliner Chassis
Defroster Fans
Telescoping Tilt Steering Wheel
Cruise Control
Intermittent Wipers
Dash Air Conditioning
Exterior Mirrors with Heat and Remote
Auxiliary Driving Lights
Fuel Fills, Both Sides
Fully Automatic Leveling Jacks
Chassis Air Suspension and Air Brakes
360HP ISB Cummins Rear Diesel Engine,
Torque 800 lbs./ft.
6-Speed Allison 300MH Automatic Transmission
22.5 Radial Tires with Aluminum Rims
Deluxe Radius Entrance Door
with Dead Bolt Lock
Front and Rear Mud Flaps
Power Entrance Steps-Double
Aluminum Side Swing Compartment Doors
Front and Rear Fiberglass Caps
Air Horn
Rear Vision Camera with Color Monitor
Color Side Cameras with Color Monitor
Roof Ladder
10,000 lb. Towing Hitch with 7-Way Plug
Slide-Out Awning(s)
Auxiliary Air Supply Hook-Ups
Flush Floor Bedroom
Pass Through Basement Storage
Full Body Paint
Crowned, Laminated Fiberglass Roof
Power Patio Awning
Frameless Tinted Windows with Safety Glass
Power Entry Door Awning
Outside Entertainment Center
Full Width Rear Rock Guard™ Sportscoach™
Lighted Interior and Exterior Assist Handles
High Gloss Gelcoat Sidewalls
(with Azdel™ Superlight Composite)
Exterior Propane Hook-Up

* Quantity of two each on 409BG

OPTIONAL FEATURES

INTERIOR COLOR SELECTIONS

Monterey
Napa
Sonoma

INTERIOR WOOD COLOR SELECTIONS

State Cherry
Darkwood
Simate

EXTERIOR COLOR SELECTIONS

Partial Paint (Standard)
Full Body Paint (Optional)

- Eventide
- Siesta Key
- Brandywine
- Cimaroon

OPTIONAL FEATURES

Front Drop-Down-Bunk
Theater Seating
Buffet Table with 2 chairs/2 folding (404RB Only)
40" Cockpit Mounted TV
(n/a with bunk)
Wardrobe in Place of Bunks (409BG Only)
Dual Pane Frameless Windows
15,000 BTU A/C with Heat Pump Front
15,000 BTU A/C with Heat Pump Rear
Slide-Out Basement Storage Tray
Stackable Washer & Dryer
Double Clear Coat for Full Body Paint
Diamond Shield Protection
CSA Up-fit
CD-MVSA (Canadian Motor Vehicle Safety Act)¹
Travel Easy Roadside Assistance
provided by Coach-Net

50TH ANNIVERSARY OPTION PACKAGE

Exterior Paint - Eventide
Custom Logo Etched
(Retail Nameplate - Numbered)
Custom Logo 50th Anniversary Jackets
Custom Logo 50th Anniversary Embroidered Seats
Black Chrome Headlight Bezels
and Side View Mirrors
Black Chrome Compartment Door Moldings
Black Chrome Rims
Chassis Underbody LED Lighting
Solar Panel
Cedar Lined Wardrobe

Notes:

¹ Mandatory For All Canadian Provinces

SPORTSCOACH RD SPECIFICATIONS

CLASS A DIESEL	404RB	407FW	409BG
CUMMINS ISB 6.7L ENGINE	360 HP@2400 RPM	360 HP@2400 RPM	360 HP@2400 RPM
ALLISON TRANSMISSION	3000MH	3000MH	3000MH
WHEEL BASE	266"	266"	266"
GVWR	32,000 lbs	32,000 lbs	32,000 lbs
GCWR	42,000 lbs	42,000 lbs	42,000 lbs
FUEL CAPACITY	100 gal	100 gal	100 gal
LP GAS CAPACITY	20 gal	20 gal	20 gal
FURNACE (BTUs)	(2) 20,000	(2) 20,000	35,000
EXTERIOR LENGTH (w/o Ladder)	41' 1"	41' 1"	41' 1"
EXTERIOR HEIGHT (w/A/C)	12' 10"	12' 10"	12' 10"
EXTERIOR WIDTH	102"	102"	102"
FRESH WATER	89 gal	89 gal	89 gal
GREY WATER	52 gal	52 gal	52/52 gal
BLACK WATER	46 gal	52 gal	52 gal
WATER HEATER	10 gal	10 gal	(2) 10 gal
AWNING SIZE	17'	18'	18'
EXTERIOR STORAGE	254 cu. ft.	254 cu. ft.	213 cu. ft.
TOW HITCH	10,000 lbs	10,000 lbs	10,000 lbs

GVWR (Gross Vehicle Weight Rating) is the maximum permissible weight of the unit when fully loaded. It includes all weights, inclusive of all fluids, occupants, cargo, optional equipment and accessories. For safety and product performance do NOT exceed the GVWR.

GCWR (Gross Combined Weight Rating) is the maximum permissible loaded weight of your motor home and any towed trailer or towed vehicle. Actual GCWR of this vehicle may be limited by the sum of the GVWR and the installed hitch receiver maximum capacity rating; see hitch rating label for detail.

GAWR (Gross Axle Weight Rating) is the maximum permissible weight, including cargo, fluids, optional equipment and accessories that can be safely supported by each axle.

UVW (Unloaded Vehicle Weight) * is the typical weight of the unit as manufactured at the factory. It includes all weight at the unit's axle(s), including full fuel, all fluids and LP Gas. The UVW does not include cargo, fresh potable water, additional optional equipment or dealer installed accessories.

* Estimated Average based on standard build optional equipment.

CCC (Cargo Carrying Capacity) ** is the amount of weight available for fresh potable water, cargo, passengers, additional optional equipment and accessories. CCC is equal to GVWR minus UVW. Available CCC should accommodate fresh potable water (8.3 lbs per gallon). Before filling the fresh water tank, empty the black and gray tanks to provide for more cargo capacity.

** Estimated average based on standard build optional equipment

Each Coachmen motorhome is weighed at the manufacturing facility prior to shipping. A label identifying the unloaded vehicle weight of the actual unit and the cargo carrying capacity is applied to every Coachmen motorhome prior to leaving our facilities.

The load capacity of your unit is designated by weight, not by volume, so you cannot necessarily use all available space when loading your unit.

Actual towing capacity is dependent upon your particular loading and towing circumstances, which includes the GVWR, GAWR and GCWR as well as adequate trailer brakes. Please refer to the Operator's Manual of your vehicle for further towing information.

All information contained in this brochure is believed to be accurate at the time of publication. However, during the model year, it may be necessary to make revisions and Coachmen reserves the right to make all such changes without notice, including prices, colors, materials, equipment and specifications as well as the addition of new models and the discontinuance of models shown in this brochure. Therefore, please consult with your Coachmen dealer and confirm the existence of any materials, design or specifications that are material to your purchase decision. 11/18

©Copyright 2018 Sportscoach RV a Division of Forest River Inc. - All Rights Reserved.

CUSTOMER SATISFACTION



www.ForestRiverBuyLocal.com



FREE MEMBERSHIP
www.coachmenowners.com



Learn More
Scan this barcode using
a QR Reader on your
smart phone to learn
more about Forest River.



A Berkshire Hathaway company.



Travel Easy™ Roadside Assistance



RVing is easier with Sportscoach's Travel Easy™ Roadside Assistance provided FREE the first year of ownership to those who purchase a New Sportscoach RV. Administered by Coach-Net, this service provides you with 24/7 operational, technical and emergency road service coverage. Also included is towing, fuel delivery, jump starts, lockout service, tire changes, mobile mechanic and unlimited technical assistance. Anywhere. Anytime. Travel Easy™ is the security of knowing that help is an easy phone call away.

Sportscoach RV, a Division of Forest River, Inc.,
A Berkshire Hathaway Company

423 N. Main St., P.O. Box 30, Middlebury, IN 46540

To learn more about Sportscoach RV and our products and see how Sportscoach is making the easy life easier, visit www.sportscoachrv.com