

# *Vintage* CRUISER



*The Best of the Old and the Best of the New - Together at last!*

# Vintage CRUISER

*The fun of the 50's,  
the technology of the 21st Century!*

Colors, interior design, and graphics of the all-new Vintage Cruisers recall the flat-out fun of the 50's - But don't worry - All the latest features are here, too, including the all-important microwave oven, Blue Tooth-enabled home theater system, cool, efficient LED lights, and wiring for satellite, cable, solar power and HDTV.

Take your pick! Teal & Cream or Crimson & Cream - Either way, you'll take the fun of the 50's with you wherever you



**A.** Spacious dinette in Teal & Cream, w/two-tone cushions, three picture windows, overhead storage, side shelf, home theater stereo & double-trumpet light.

**B.** Galley w/microwave, 2-burner cooktop, power vent hood, two-door refrigerator & double-bowl sink w/hi-arc faucet.

**C.** Crimson & Cream version of dinette, showing LED & double-trumpet lights, folding convertible table, & side shelf.

**D.** Bedroom w/underbed storage, two windows, shirt closets, overhead storage, individual reading lights & HDTV hookups.

**E.** Entertainment center w/HDTV option on swing-arm bracket.

**F.** Crimson & Cream galley kitchen showing double sink, stainless appliances, & light Roanoke Cherry Cabinets.

**G.** Color-matched 6.0 cu. ft. double-door refrigerator/freezer.

**H.** Bedroom w/60" x 74" mattress, custom comforter, Vintage Cruiser logo pillow shams, overhead storage, skylight, individual reading lights & hookups for HDTV.

**NOTE:** Many of our most popular features & options are part of the "Vintage Package," included on every Vintage Cruiser.



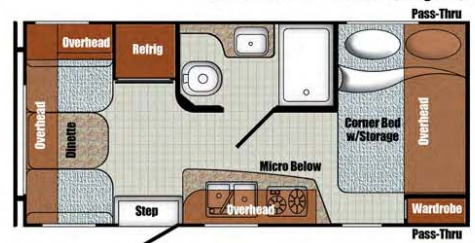
### Construction Highlights

Your new Vintage Cruiser is built with quality and care by Gulf Stream Coach craftspeople, and features:

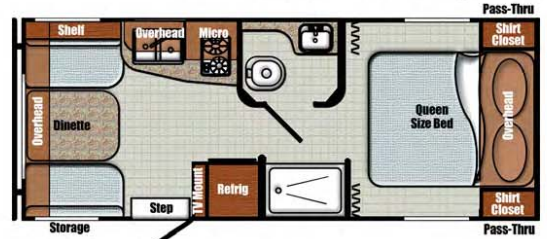
- Vacuum-bonded laminated walls and floor.
- Mold, mildew, and rot-free synthetic substrate & rigid polyfoam insulation in walls.
- Seamless fiberglass roof that extends from the front hitch "A" to the rear bumper.
- Rigid, lightweight welded aluminum frame.
- Fuel-saving aerodynamic profile.
- Extremely low and easy step-in height.
- 6'11" of interior headroom.
- Light Roanoke Cherry cabinets w/solid wood stiles.
- Stainless steel appliances.
- Full dry bath with foot-flush toilet.
- Much, much more - Ask your Dealer!

### Floor Plans

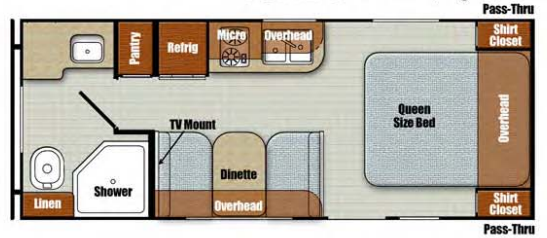
**17RWD** L: 20'0", Wgt: 2,825 lbs.



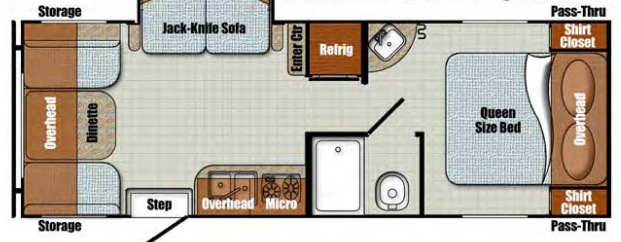
**19ERD** L: 22'11", Wgt: 3,225 lbs.



**19RBS** L: 22'11", Wgt: 3,325 lbs.



**23RSS** L: 25'11", Wgt: 4,325 lbs.



## Standard Features

### Decor

- Congoleum Non-Stick Vinyl Flooring
- Easy-Care Wall & Ceiling Vinyl
- Solid Wood Cabinet Stiles
- Light Roanoke Cherry Cabinetry

### Heating & Cooling

- Prewired for Roof Air Conditioner
- 20,000 BTU Furnace w/Wall Thermostat (16,000 BTU on 17RWD)
- 6 Gal DSI Gas Water Heater

### Safety

- Easy-Entry Step Well
- Break-Away Switch; Safety Chains
- Wall-Mount Fire Extinguisher
- Combo LP & CO Detector
- Smoke Detector

### Electrical/Power

- Satellite & Cable-Ready Prep
- Intelli-Tank Monitor Panel
- Hitch Light
- LED Running Lights
- LED Pass Through Storage Light w/Switch
- LED Step Light w/Switch
- LED Interior Ceiling Lights
- Non-Directional TV Antenna w/Booster
- Solar-Ready Prep
- 30 Amp 30' Power Cord w/Storage
- 55 Amp Converter w/Charger & LED Indicators
- Power Range Hood w/Light

### Bath

- Foot Flush Toilet
- High Velocity Bath Vent
- Wood Medicine Cabinet w/Mirror
- Radius Shower Curtain
- Tub/Shower Surround
- 24" x 36" Shower (19ERD)
- 32" x 32" NeoAngle Shower (19RBS)
- 24" x 36" Tub (17RWD, 23RSS)

### Furnishing

- Booth Dinette
- Bed w/64" x 70" Mattress (n/a 17RWD)
- Comfort Series Jack Knife Sofa (23RSS)

### Windows & Doors

- Friction Hinged Entry Door
- Black Radius Tinted Windows
- Radius Compartment Doors w/Magnetic Catches

### Exterior

- One Piece Fiberglass Roof, Front/Rear Walls
- Welded Alum. Frame, Vacuum Bonded Walls
- Light Weight Chassis
- Laminated Floor w/Luan Substrate
- Laminated Fiberglass Sidewalls w/exterior layer of Composite Substrate
- Easy Lube Axles
- Two 20 lb. LP Bottles w/Cover
- In-Floor Spare Tire Storage under Bed
- Manual Awning

## Popular Options

- 3-Burner Range w/Oven
- Interior & Exterior TV Mounting Brackets
- Electric Awning
- LED Awning Light w/Speakers (required)
- Power Tongue Jack in place of Manual Jack
- 19" and/or 29" LCD/HDTV
- Neo-Angle Glass Shower Door (19RBS)
- 13,500 BTU Air Conditioner (non-ducted)
- Blue Tooth Home Theater Stereo w/Speakers
- Premium Foam Mattress
- 14" Spare Tire
- Outside Spray Port
- 6 Gal DSI Gas/Electric Water Heater
- Sink Covers
- Black Tank Flush
- Rear Bumper Mount Gas Grill

## Vintage Package (included, required)

You get all this!

- Vintage Exterior Graphics w/Oyster Glass
- Vintage Bumper, A-Frame & Radius Metal, Fender Skirts, & Rims
- 14" Radial Tires w/Moon Hubcaps
- Front & Rear Brushed Aluminum Diamond Plate
- Woodgrain Vinyl Flooring
- All Woodgrain Interior
- Vintage Theme Decorative Border
- Cream Countertop w/Self-Edging
- Bedroom Reading Lights
- Stainless Microwave & 2-Burner Cooktop w/Cover
- 6 cu. ft. Double Door Refrigerator/Freezer (n/a 17RWD)
- Vintage Flat Cabinet Doors
- Vintage Dinette
- Vintage Drape Package w/Decorative Rods
- Vintage Custom Comforter w/Vintage Logo Pillow Shams
- Vintage Double Trumpet Dinette Light
- Pearl Fabric Shower Curtain

# Vintage CRUISER

The latest from Vintage Cruiser: We've captured the memories of family vacations of the 50's and 60's in our "Wood Estate Wagon" Package with wood-look graphics outside and a knotty pine styled interior. Ask your dealer about it!



Wood Estate Wagon Package



## Specifications

Model	17RWD	19ERD	19RBS	23RSS
<b>Length</b>	20'0"	22'11"	22'11"	25'11"
<b>Height w/AC</b>	9'10"	9'10"	9'10"	9'10"
<b>Width</b>	7'6"	7'6"	7'6"	7'6"
<b>Dry Weight</b>	2,825 lbs.	3,225 lbs.	3,325 lbs.	4,325 lbs.
<b>Hitch Weight</b>	290 lbs.	390 lbs.	390 lbs.	480 lbs.
<b>Carrying Capacity</b>	1,125 lbs.	1,105 lbs.	1,005 lbs.	2,075 lbs.
<b>Fresh Water</b>	28 gal.	28 gal.	28 gal.	28 gal.
<b>Grey &amp; Black Tanks</b>	30/30 gal.	30/30 gal.	30/30 gal.	30/30 gal.
<b>Hot Water Capacity</b>	6 gal.	6 gal.	6 gal.	6 gal.
<b>LP Capacity</b>	2 x 20 lbs.	2 x 20 lbs.	2 x 20 lbs.	2 x 20 lbs.

Specifications are approximate and subject to change. Check the Weight Sticker on your unit for actual weights.



QUALITY • INNOVATION • VALUE

503 South Oakland Avenue  
Nappanee, IN 46550

[www.gulfstreamcoach.com](http://www.gulfstreamcoach.com)

Your Gulf Stream Coach Dealer:

Specifications, materials, & standard features are subject to change without further notice. Not responsible for typographical errors. Some items shown are extra cost options. Visit [www.gulfstreamcoach.com](http://www.gulfstreamcoach.com) or check with a local dealer for more information. ©VIN082016

Colton RV  
3122 Niagara Falls Blvd.  
North Tonawanda, NY 14120  
(716) 694-0188  
[www.ColtonRV.com](http://www.ColtonRV.com)

Colton RV  
3443 Southwestern Blvd.  
Orchard Park, NY 14127  
(716) 957-3250  
[www.ColtonRV.com](http://www.ColtonRV.com)

Colton RV  
489 Bushkill Plaza LN #9665  
Wind Gap, PA 18091  
(610) 863-5239  
[www.ColtonRV.com](http://www.ColtonRV.com)