

CLASS-A

ALLEGRO OPEN ROAD

MODEL YEAR 2023 | PRODUCT UPDATES

Initial MY2023 Model Change Plans, Subject to Change in Full Production

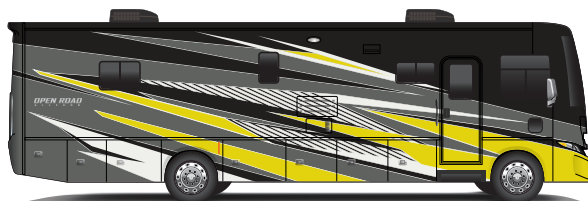
Date Revised: 4/12/22

TIFFIN

20
23

Premium Paint System

Our eight-step, full-body paint system features premium grade paints sealed with three layers of superclear coat with ultraviolet protection. An additional layer of high-performance film protects the front of the coach and select areas.



50TH ANNIVERSARY

NEW

Generation 9 Paint Schemes



G9 BARCELONA



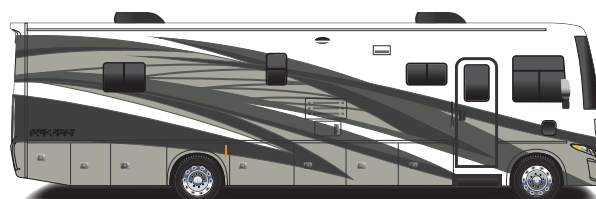
G9 SUNLIT SAND



G9 NASA



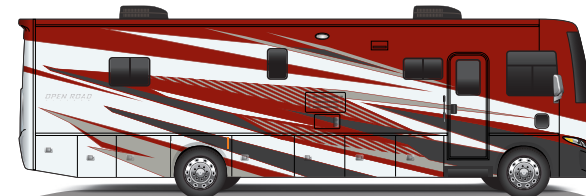
G9 WHITE MAHOGANY



G9 FROSTED GRANITE

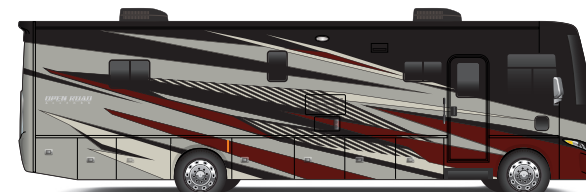
NEW

Generation 10 Paint Schemes



G10 BARCELONA

UPDATED



G10 SUNLIT SAND

UPDATED



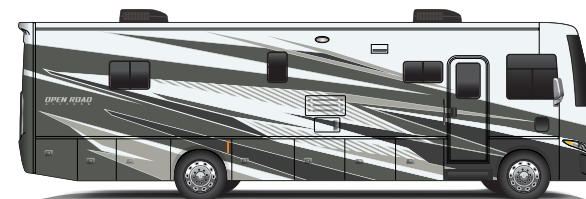
G10 NASA

UPDATED



G10 WHITE MAHOGANY

UPDATED



G10 FROSTED GRANITE

NEW

Floor Plans



The design of every Open Road floor plan must meet four essential criteria: Maximum space, Optimal organization, Relaxation plus, and Elegant atmosphere. Tiffin's MORE Plans offer your family the most comfortable layout for life on the road.

If optional furniture combinations are selected, window locations may vary from diagram shown.

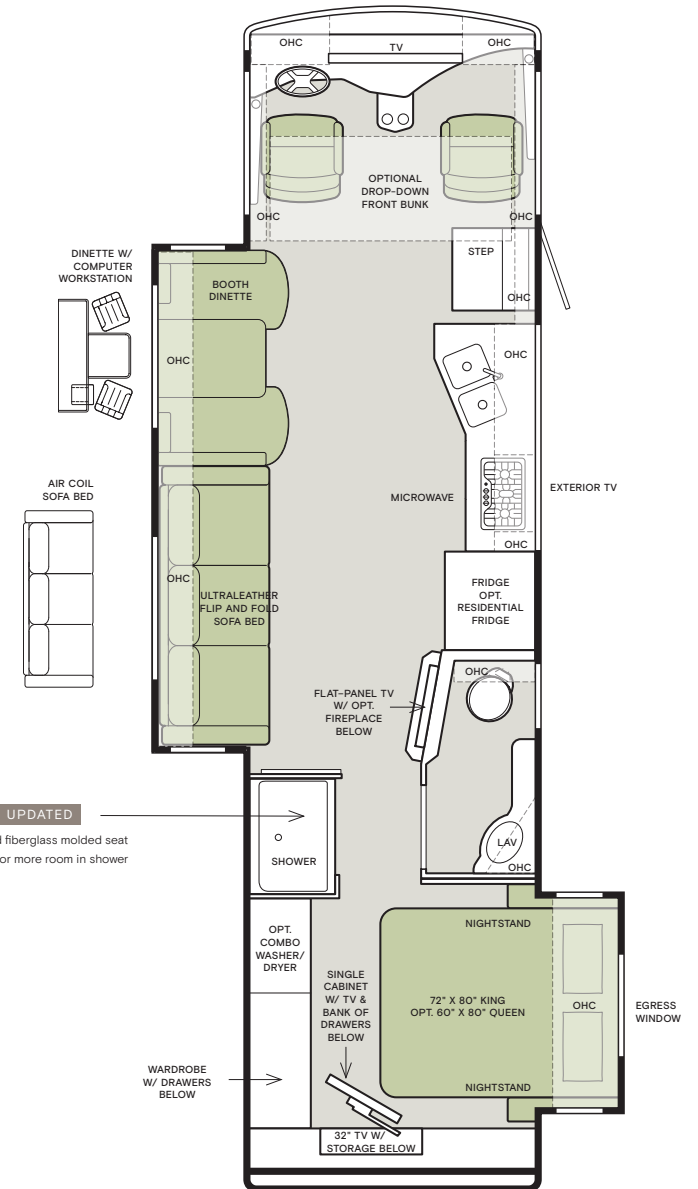
All options may not be available in every model. Because of progressive improvements and specifications, standard and optional equipment are subject to change without notice or obligation.

For a complete and up-to-date list of available options and specifications, visit tiffinmotorhomes.com.

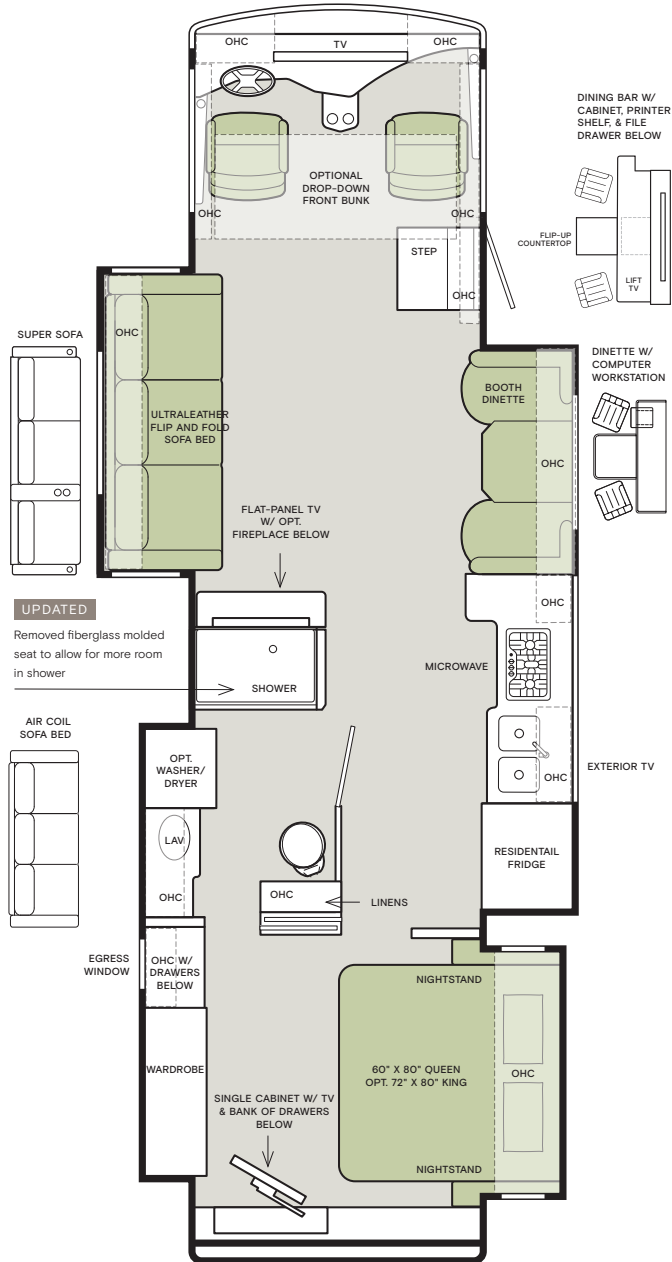
32 FA



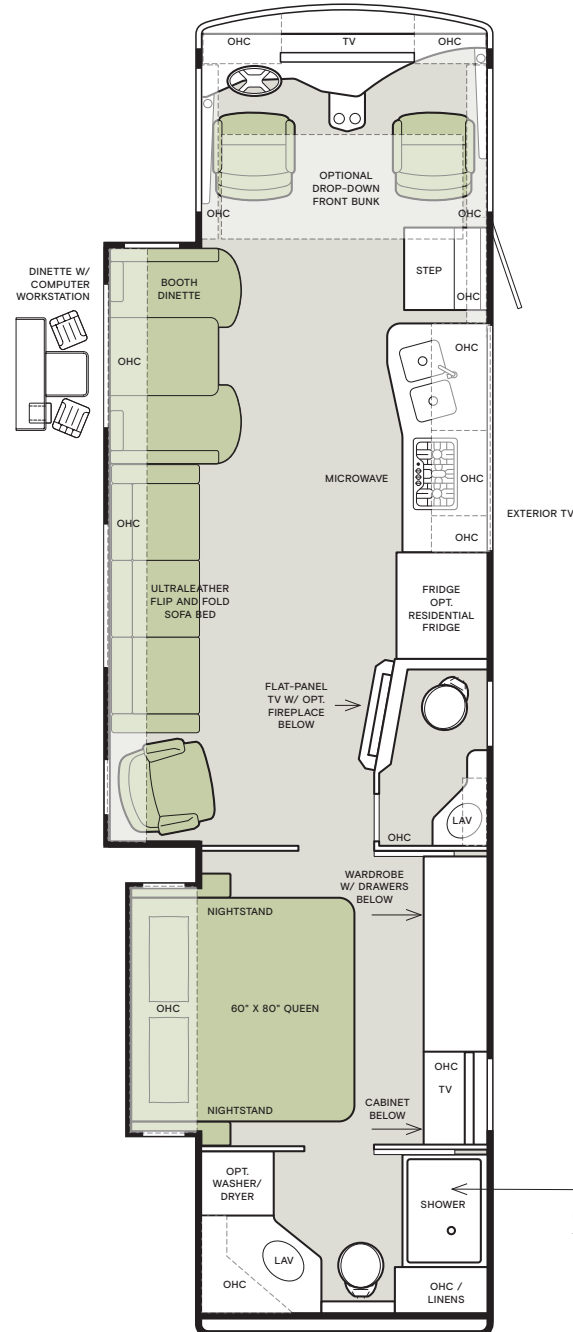
32 SA



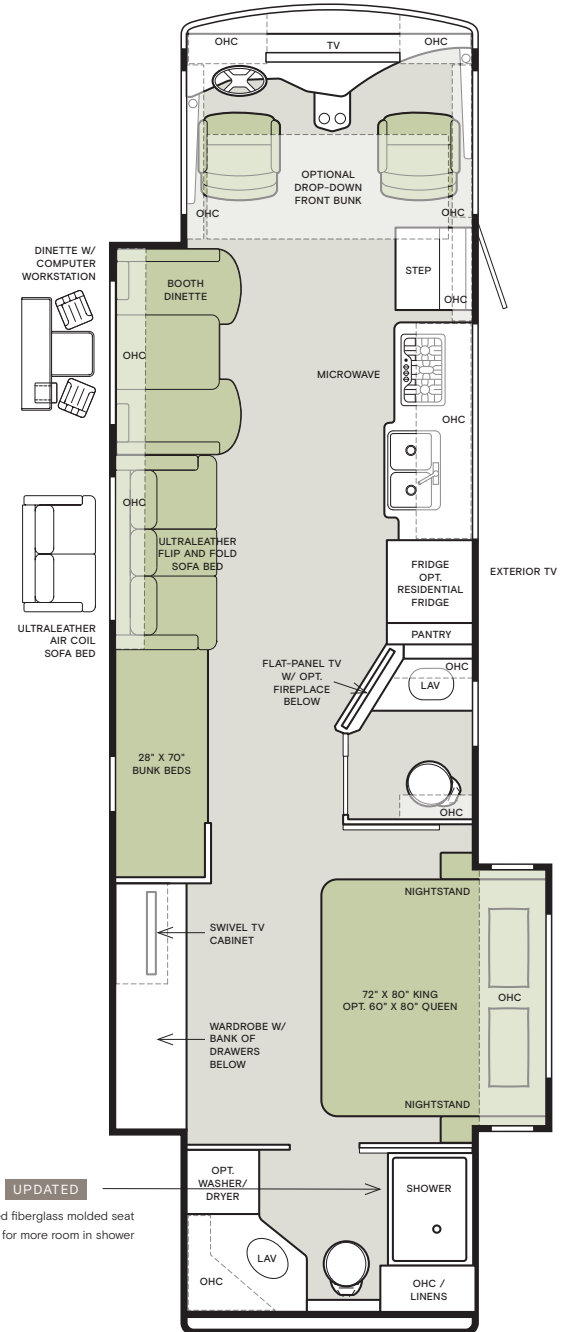
34 PA



36 LA



36 UA



Interior Décor

Make your experience on the road all your own. Express yourself by choosing the interior appointments such as cabinet finishes, flooring, and décor ensembles for every part of your motorhome. In the 2023 Open Road, you'll be able to travel in style no matter where you go.

NO LONGER AVAILABLE

- City Shadow III
- Portico Linen II
- Sandbar III

CABINETS



AMBER GLAZED



SHADOW



NATURAL ALDER

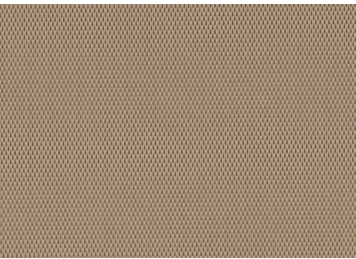
FLOORING



SEAGRASS Matte Finish Tile

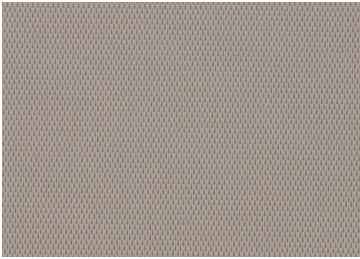
NEW

ULTRALEATHER



TRAIL (S)

NEW



TAUPE HILL (O)

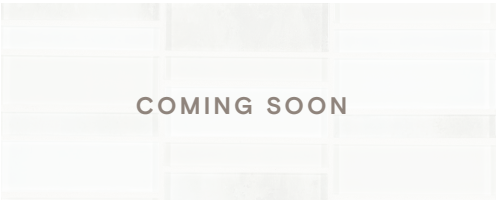
NEW

MOONDANCE

NEW



WINDOW TREATMENT



BACKSPLASH



COUNTERTOP



LIVING ROOM



MASTER SUITE

STONEWASHED

NEW



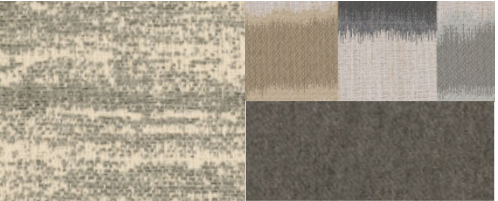
WINDOW TREATMENT



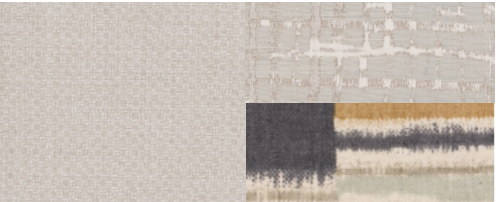
BACKSPLASH



COUNTERTOP



LIVING ROOM



MASTER SUITE

Specifications, Options, and Features

WEIGHTS AND MEASURES	32 FA	32 SA	34 PA	36 LA	36 UA
GAWR—Front (lb)	9,000	9,000	9,000	9,000	9,000
GAWR—Rear (lb)	15,500	15,500	17,500	17,500	17,500
GVWR (lb)	24,000	24,000	26,000	26,000	26,000
Hitch Rating (lb)	5,000	5,000	5,000	5,000	5,000
Maximum Trailer Weight (lb) ¹	5,000	5,000	4,000	5,000	4,000
GCWR (lb)	30,000	30,000	30,000	30,000	30,000
Wheel Base	228"	228"	252"	252"	252"
Tire Size (Michelin GXRv)	235/80 R22.5	235/80 R22.5	255/80 R22.5	255/80 R22.5	255/80 R22.5
Fuel Tank (gal.)	80	80	80	80	80
Alternator Amps	210	210	210	210	210
Overall Length (approximately) ²	34' 3"	34' 3"	36' 1"	37' 6"	38"
Overall Height (maximum)	12' 10"	12' 10"	12' 10"	12' 10"	12' 10"
Interior Height	84"	84"	84"	84"	84"
Overall Width ²	101"	101"	101"	101"	101"
Interior Width	96"	96"	96"	96"	96"
LPG Tank (gal; can only be filled to 80% capacity)	24	24	24	24	24
Basement Storage (cubic ft. – app.)	140	140	203	203	203
Minimum Garage Height	14'	14'	14'	14'	14'
Fresh Water (gal.)	70	70	70	70	70
Black Water (gal.)	50	50	50	50	50
Grey Water (gal.)	66	66	66	66	66

¹ Maximum Trailer Weight is dependent on the loading and towing variables which include the GVWR, GAWR and GCWR, as well as adequate trailer brakes.

² The approximated coach width and length does not include side-view mirrors and rear ladders.

CHASSIS AND DRIVETRAIN

- Ford® Chassis
 - V8 7.3L Engine
 - Peak HP 350 HP @ 3,900 RPM
- Peak Torque (lb — Ft. Max Net) 468 @ 3,900 RPM
 - TorqShift® 6-speed Automatic Overdrive with Tow/Haul Mode
 - Traction Control System
- Cruise Control
 - Emergency Start Switch
 - Four Aluminum Wheels
 - Hydraulic Automatic Leveling Jacks

CHASSIS SPECIFICATIONS ¹	32 FA	32 SA	34 PA	36 LA	36 UA
LiquidSprings	—	—	O	S	O

¹ 22k Chassis is no longer available

ELECTRICAL					
• 50 Amp Service	• 110 V Exterior Receptacle	• Inverter Remote Switch			
• Two 13.5K BTU Roof Air Conditioners	• 110 V/12 V Converter (Integrated with Inverter)	• Cable TV Ready Hook-up			
• Two 6V House Batteries		• External Tripod Satellite Hook-up			
• Aux Solar Port (Solar Kits not Included)	• Inverter — Operates TVs, Surround Sound, and Optional Residential Refrigerator	• Extraordinaire™ AC System			
• Ducted Furnace System		• Spyder Controls Multiplex System and Thermostats			
ELECTRICAL OPTIONS					
5.5 kw Onan® Generator	S	S	S	—	—
7.0 kw Onan® Generator	O	O	O	S	S
In-motion Satellite Dish ¹	O	O	O	O	O
Prep Solar Panel(s) ²	O	O	O	O	O
One Solar Panel with Docking Ports	O	O	O	O	O
Two Solar Panels with Docking Ports	O	O	O	O	O
CB Antenna	O	O	O	O	O
Wi-Fi Booster	O	O	O	O	O
Pre-wired for Winegard TRAV'LER Satellite ¹	O	O	O	O	O
2000 Watt Pure Sine Inverter with Automatic Gen Starter ⁴	O	O	O	O	O
Cellular Signal Booster	O	O	O	O	O

¹ In-motion Satellite Dish and Prep for Winegard TRAV'LER may not be available together on all models

² Docking Ports for Aftermarket Solar Panels

³ Must be combined with 7.0 kw Generator

⁴ 2000 Watt Pure Sine Inverter requires four 6 V House Batteries.

PLUMBING

- Exterior Rinse Hose/Shower
 - Water Filtration System
 - Low-point Water Drain Lines
 - Lighted Plumbing Compartment
- Heated Water and Holding Tank Compartment
 - Water Heater Bypass System
 - Black Holding Tank Flush System
- Gravity Water Fill
 - Aquaview ShowerMiser
 - Truma® Gas Continuous Water Heater^{1,2,3}

¹ Now Standard for all Floor plans; Now controlled through the Spyder Multiplex Control Panel

² 6-gallon DSI Gas/Electric Water Heater no longer available

³ 10-gallon DSI Gas/Electric Water Heater no longer available

EXTERIOR

- Fiberglass Front and Rear Caps
 - Protective Film on Front Cap and Select Areas
 - Form-fitted Seamless Roof
 - Tinted One-piece Windshield
 - Double Electric Step
 - 1/4" Thick Single Pane Windows
 - Horizontal Mounted Wipers
- Chrome Heated Power Mirrors with Integrated Turn Signal Cameras
 - LED Patio and Door Light
 - Lighted Basement Storage
 - Convenient Compartment Doors with Gas Shocks
 - Single Handle Lockable Storage Door Latches
- Roof Mount Digital TV Antenna
 - Power Patio Awning
 - Patio Side Exterior Flat-panel TV
 - Slide-out Toppers
 - Color Back-up Camera
 - Full-body Paint
 - Fast charge USB ports for exterior TV box

EXTERIOR OPTIONS	32 FA	32 SA	34 PA	36 LA	36 UA
14.5' Lippert™ On-The-Go Ladder ¹	UPDATED	O	O	O	O

¹ All units will ship with a Lippert On-The-Go™ Prepped Receiver installed.

INTERIOR

- High Gloss Flat-panel Handcrafted Cabinet Doors
 - Handcrafted Cabinet Fascias
 - Ball Bearing Drawer Slides
 - Soft Touch Vinyl Ceiling
 - Luxury Vinyl Tile Floor
 - LED Lighting
- Treated Fabrics
 - Solar Shades and Blackout Night Shades
 - Roof Vent Fan
 - Tank Level Monitor System
 - Smoke Detector
 - Carbon Monoxide Detector
- LPG Leak Detector
 - USB Ports
 - Flat-panel TV
 - Sound Bar System with Subwoofer in Living Area
 - BluRay® Player

INTERIOR OPTIONS		32 FA	32 SA	34 PA	36 LA	36 UA
Central Vacuum Cleaner		O	O	O	O	O
Prep for Combo Washer/Dryer		—	S	S	S	S
Combo Washer/Dryer		—	O ¹	—	—	—
Stacked Washer/Dryer		—	O	O	O	O
Additional Solid Surface Upgrades (Dinette and Mantle)		O	O	O	O	O
Midsection Flat-panel TV		—	S	S	S	S
Fireplace below Midsection Flat-panel TV		—	O	O	O	O
Bunk Beds		S	—	—	—	S
Handcrafted Cabinetry ²	Amber Glazed	O	O	O	O	O
	Shadow	O	O	O	O	O
	Natural Alder	O	O	O	O	O
Fabric Suites ³	Moondance	O	O	O	O	O
	Stonewashed	O	O	O	O	O
Floor Tile ⁴	Sea Grass (Matte Finish)	S	S	S	S	S
Ultraleathers ⁵	Trail	O	O	O	O	O
	Taupe Hill	O	O	O	O	O

¹ Combo Washer/Dryer is only available on the 24K Chassis.

² Optional and at no charge.

³ City Shadow III, Portico Linen II and Sandbar III will no longer be available

⁴ Sand Castle will no longer be available

⁵ Belgian and Cocoon will no longer be available

DRIVER'S COMPARTMENT

- Entry Step Well Light
 - Ultraleather Power Driver and Passenger Seats
 - House Battery Disconnect Switch
 - Back-up Camera Color Monitor
- USB Dash Receptacle
 - CD Player and AM/FM Stereo
 - Two Cupholders
 - 12V Dash Receptacle
 - Tilt/Telescope Steering Wheel
- Dual Dash Fans
 - Power Solar and Privacy Windshield Shades
 - Fire Extinguisher
 - Satellite Radio Prep (requires subscription)

DRIVER'S COMPARTMENT OPTIONS		32 FA	32 SA	34 PA	36 LA	36 UA
In-dash Navigation System		O	O	O	O	O
CB Antenna (Prep for CB Radio)		O	O	O	O	O
Ultraleather Power Passenger Seat with Footrest		O	O	O	O	O
Overhead Drop-down Bunk		O	O	O	O	O
Front Overhead Flat-panel TV		UPDATED O	O	O	O	O

LIVING AREA/DINETTE OPTIONS ¹	32 FA	32 SA	34 PA	36 LA	36 UA
Ultraleather Flip and Fold Sofa on Passenger Side	S	—	—	—	—
Ultraleather Flip and Fold Sofa on Driver Side	—	S	S	—	S
Ultraleather Sleeper Air Coil Sofa on Driver Side	—	O	O	—	—
Ultraleather Air Coil Sofa Bed on Driver Side	—	—	—	—	O
Ultraleather Super Sofa on Driver Side	—	—	O	—	—
Ultraleather Flip and Fold Sofa and One Recliner on Driver Side	—	—	—	S	—
Ultraleather Sleeper Air Coil Sofa and One Recliner on Driver Side	—	—	—	O	—
Ultraleather Booth Dinette on Driver Side	UPDATED —	S	—	S	S
Dinette with Computer Workstation on Driver Side	—	O	—	O	O
Ultraleather Booth Dinette on Passenger Side	UPDATED —	—	S	—	—
Dinette with Computer Workstation on Passenger Side	—	—	O	—	—
Dinette Bar with Lift TV on Passenger Side	—	—	O	—	—
Dinette Bar with Lift TV on Driver Side	S	—	—	—	—
Dinette with Computer Workstation with Lift TV on Driver Side	O	—	—	—	—

¹ L-Shaped Sofas no longer available

KITCHEN

- Spray Rinser at Sink Faucet
- Double Bowl Stainless Steel Sink

- Solid Surface Galley Countertop
- Convection Microwave with Exterior Venting

- Solid Surface Cooktop Covers
- Panoramic Galley Window

KITCHEN OPTIONS ¹	32 SA	32 SA	34 PA	36 LA	36 UA
Residential Refrigerator ^{2,3}	S	S	S	S	S
3-burner Cooktop	S	S	S	S	S
Oven with Cooktop	O	O	O	O	O

¹ 2-door Gas/Electric Refrigerator with Pantry no longer available

² Residential Refrigerator requires four 6V House Batteries.

³ Now standard for all floor plans

BEDROOM

- Wardrobe with Automatic Light
- Bed Comforter with Throw Pillows

- Wall-to-wall Luxury Vinyl Tile Flooring (Excludes Slide-outs)

- Solar/Privacy Shades
- Flat-panel TV

BEDROOM OPTIONS	32 FA	32 SA	34 PA	36 LA	36 UA
Ceiling Fan	O	O	O	O	O
Memory Foam King Mattress (72" x 80")	S	S ¹	O	—	S
Memory Foam Queen Mattress (60" x 80")	O	O	S	S	O

¹ King Mattress is only available on the 24K Chassis option.

BATHROOM

- Medicine Cabinet
 - Skylight and LED Light in Shower
- Water Pump Switch
 - Roof Vent Fan
- Fiberglass Shower¹

¹ Removed fiberglass molded seat to allow for more room in shower

Because of progressive improvements and specifications, standard and optional equipment are subject to change without notice or obligation. For a complete and up-to-date list of available options and specifications, visit tiffinmotorhomes.com.

1

YEAR OR 12,000 MILES
LIMITED WARRANTY

5

YEARS OR 50,000 MILES
DELAMINATION
LIMITED WARRANTY

10

YEARS OR 50,000 MILES
CONSTRUCTION
LIMITED WARRANTY

1

YEAR COACH
ROADSIDE SERVICE

∞

ONGOING
CUSTOMER SUPPORT

Colton RV
3122 Niagara Falls Blvd
North Tonawanda, NY 14120
(716) 694-0188
www.ColtonRV.com

Colton RV
3443 Southwestern Blvd
Orchard Park, NY 14127
(716) 957-3250
www.Coltonrv.com



TIFFIN
MOTORHOMES

FOR PARTS & SERVICE CALL 256.356.0261 OR VISIT TIFFINMOTORHOMES.COM | 105 2ND ST NW RED BAY, AL 35582  

©2021 Tiffin Motorhomes, Inc. Allegro®, Allegro Breeze®, Allegro RED®, Phaeton®, Allegro Bus®, Zephyr®, Wayfarer®, Roughing It Smoothly®, Open Road®, PowerGlide®, Pusher® and Cahaba® are registered trademarks of Tiffin Motorhomes, Inc. All rights reserved.
For all information concerning the limited warranty provided by Tiffin, please refer to the full written limited warranty set forth on the Tiffin website or held by our authorized dealerships. Please note, some interior furnishings not included.