

SILVERBACK

CEDAR CREEK

by Forest River



The Smart Choice for the Experienced RV'er
Fifth Wheels & Travel Trailers by Forest River

Forest River, Inc. / 501 Hawpach Road / Topeka, IN 46571
Ph: 260-593-2404 / Fax: 260-593-2447

Visit our website at www.forestriverinc.com

Colton RV
North Tonawanda, NY 14120
(716) 694-0188
(800) 628-4889
www.ColtonRV.com



Silverback 30LSTS
 features a slide-out
 kitchen.



Entertainment center, fireplace,
 and computer desk in the
Silverback 33LCDTS.

Silverback 30LSTS shown in
Sienna Road fabric.



Silverback Fifth Wheels



Silverback Travel Trailers





Silverback 30LSTS shown with large mirrored medicine cabinet and vanity.

“Impressive” describes the Silverback bedroom furnished with a queen size bed, large wardrobe space, dresser, TV cabinet, and vanity. Matching quilted bedspread, pillow cover, window treatment, and headboard impart a designer look.



Cedar Creek’s Silverback line offers unbelievably spacious interiors, gracious styling, and opulent furnishings. Although comfort and elegance are important priorities, the practical side of RV living receives equal treatment with efficient floor plans, lots of large storage areas, name brand appliances, and handy built-in conveniences that save time and space. The Silverback comes in a wide choice of travel trailer and fifth wheel models with a list of standard features so complete you’ll wonder what else could possibly be added.

SILVERBACK
CEDAR CREEK





Silverback 33LCDTS Optional lightweight ultra-leather recliners provide comfortable seating without compromising luxury.

Professionally designed interiors artfully combine style with form and function. Carefully selected fabrics, textures, and colors create a fashionable, yet homey, atmosphere to enhance your leisure time enjoyment. Embossed woodgrain passage doors, coordinating wall paper border, lambrequin style valances, and trackless plush pile carpeting are just a few of the decorative touches that make the Silverback difference.



33LBHTS Slide-out bunks create a spacious kids' room.



Silverback 33LBHTS Crown molding complements the overhead kitchen cabinets.

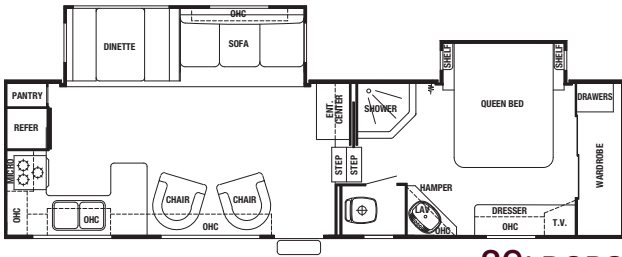


An adjustable slide-out pantry is a handy storage feature.

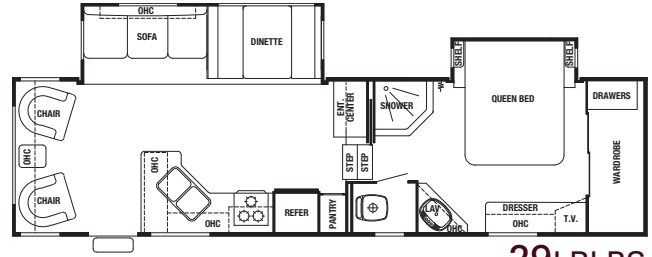


Silverback 30LSTS Solid ash cathedral style kitchen cabinets add beauty as well as abundance storage.

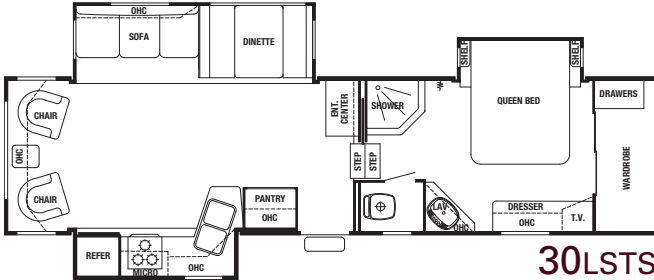
Silverback Fifth Wheel Floor Plans



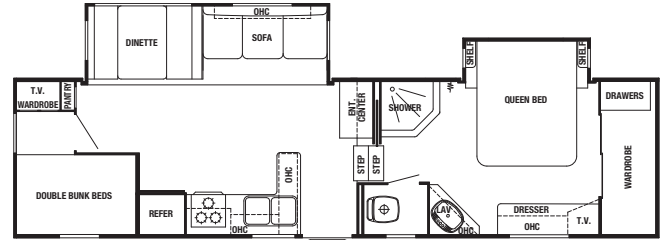
29LRGBS



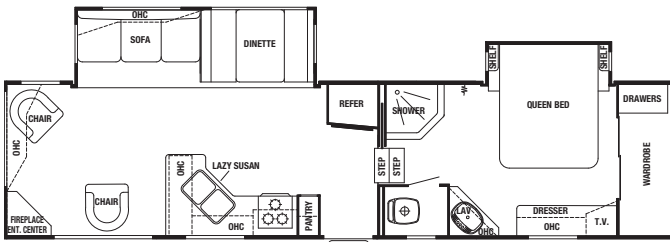
29LRLBS



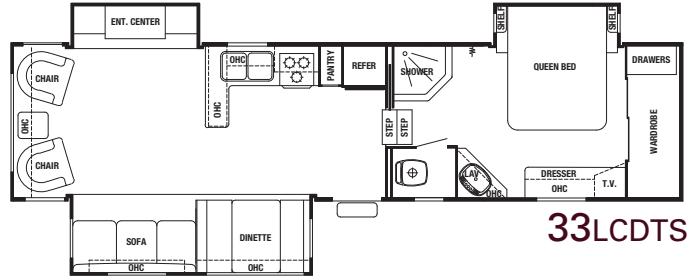
30LSTS



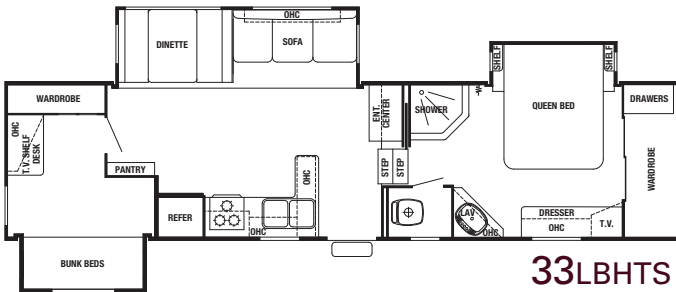
31LBHBS



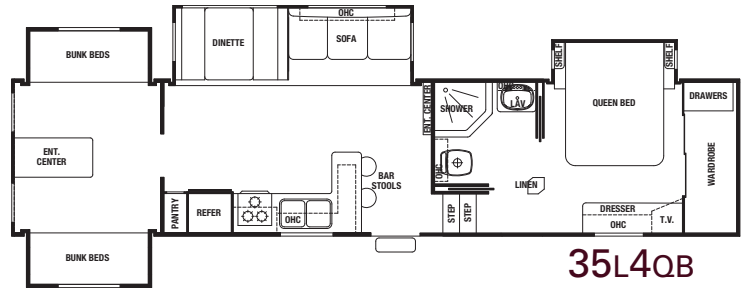
33LRLBS



33LCDTS



33LBHTS



35L4QB

Silverback Fifth Wheel Specifications

*See Bunk Room Options on Page 9.

	29LRGBS	29LRLBS	30LSTS	31LBHBS	33LRLBS	33LCDTS	33LBHTS	35L4QB
Exterior Length	32'9"	32'6"	33'8"	33'1"	35'1"	35'2"	35'1"	38'
Exterior Height w/Air Conditioner	12'11"	12'11"	12'11"	12'11"	12'11"	12'11"	12'11"	12'11"
Exterior Width	96"	96"	96"	96"	96"	96"	96"	96"
Interior Height	80"	80"	80"	80"	80"	80"	80"	80"
Hitch Weight	1690	1850	1737	1920	1970	1805	1830	1850"
Axle Dry Weight	7840	8220	8272	8000	8114	8718	8662	9699
Unloaded Vehicle Weight	9530	10070	10009	9920	10084	10523	10492	11549"
GVWR	12090	12250	13737	12320	12370	13805	13830	15500"
Gross Cargo Capacity*	2560	2180	3728	2400	2286	3282	3338	3728"
Dual Axles (2)	5200# Straight	5200# Straight	6000# Straight	5200# Straight	6000# Straight	6000# Straight	6000# Straight	7000# Straight
Wheel Size	16 x 6	16 x 6	16 x 6	16 x 6	16 x 6	16 x 6	16 x 6	16 x 8
Tire Size	LT235/85R16/E	LT235/85R16/E	LT235/85R16/E	LT235/85R16/E	LT235/85R16/E	LT235/85R16/E	LT235/85R16/E	ST235/85R16/G
Awning Size	21'	21'	18'	21'	21'	16'	21'	18'
Furnace Size	30 BTU	30 BTU	30 BTU	30 BTU	30 BTU	30 BTU	30 BTU	35 BTU
Demand Fresh Water Capacity	60	60	60	60	60	60	60	60
Black and Gray Water Capacity	40/40/28	40/40/28	40/40/40	40/40/28	40/40/40	40/40/40	40/40/40	40/40/40
Sleeping Capacity	6	6	6	6	6	6	9	10

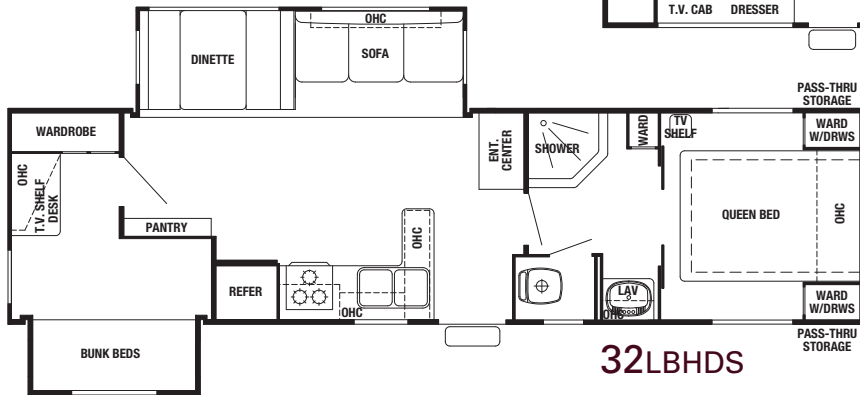
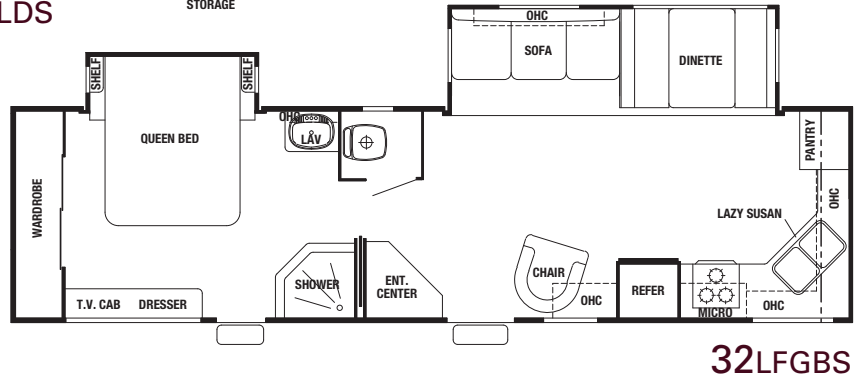
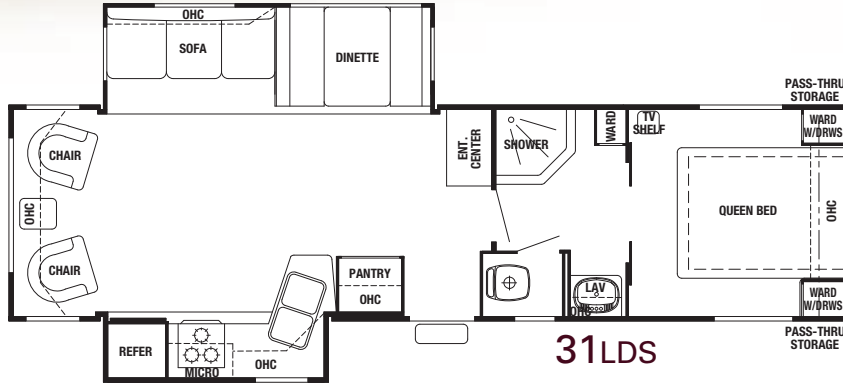
All weights listed above are base weights. Weight capacities +/- 5%. NOTE: All fifth wheel lengths include extended pin box and 4" bumper. *Cargo Capacities listed above are calculated using Base Unit Weight and filled fresh water and waste holding tanks. Model number of any particular unit does not necessarily reflect the overall length of the unit itself.

SILVERBACK

TRAVEL TRAILERS



Silverback Travel Trailer Floor Plans



Silverback Travel Trailer Specifications

	31LDS	32LBHDS	32LFGBS
Exterior Length	35'1"	35'9"	35'
Exterior Height w/Air Conditioner	11'	11'	11'
Exterior Width	96"	96"	96"
Interior Height	80"	80"	80"
Hitch Weight	882	886	1050
Axle Dry Weight	7646	7810	7371
Unloaded Vehicle Weight	8528	8696	8421
GVWR	11282	11086	11450
Gross Cargo Capacity*	2754	2390	3029
Dual Axles (2)	5200# Straight	5200# Straight	5200# Straight
Wheel Size	16 x 6	16 x 6	16 x 6
Tire Size	LT235/85R16/E	LT235/85R16/E	LT235/85R16/E
Awning Size	18'	21'	21'
Furnace Size	30 BTU	30 BTU	30 BTU
Demand Fresh Water Capacity	60	60	60
Black and Gray Water Capacity	40/40/40	40/40/40	40/40/28
Sleeping Capacity	6	6	6

All weights listed are base weights. Weight capacities +/- 5%. NOTE: All fifth wheel lengths include extended pin box and 4" bumper. *Cargo Capacities listed above are calculated using Base Unit Weight and number of filled fresh water and waste holding tanks. Model number of any particular unit does not necessarily reflect the overall length of the unit itself.



SILVERBACK

CEAR CREEK



Silverback Standard Features

Standard Exterior Features

- #30 Gas Bottles with Bottle Cover & Automatic Change Over
- 15,500 LB Rated Extended Pin Box
- 16" Tires on all Travel Trailers and Fifth Wheels
- 21' Awning (Where Applicable)
- 30" Radius Front Door Entry with Deadbolt Lock and Drip Cap
- 55 AMP Power Converter
- 56 x 32 Front Storage Compartment Door
- 110V. Exterior Outlet
- Adjustable Hanger Plates (Fifth Wheels Only)
- All Double Slide Room Travel Trailers and / or Fifth Wheels will be Hydraulic Rack and Pinion with Manual Expansion and Contraction Capabilities
- All Single Slide Room Travel Trailers will be Electric with Manual Expansion and Contraction Capabilities
- Aluminum Bumper Cover
- Below Floor Fresh Water Tank for More Interior Storage
- Black Tank Flush
- Break Away Switch
- Cambered 10" I-Beam on all Travel Trailers and Fifth Wheels
- Cavernous "Z" Frame Storage includes Vinyl Floor Covering, turning your Front Storage Compartment into a Front Storage Shed - No Dirt Grabbing Truck Felt
- Convenient Single Access Phone Jack and Cable TV Connections
- Detachable 30 AMP Power Cord
- Enclosed and Insulated Underbelly (Optional - Large Surface, 12V. Tank Heating Pads)
- Easy Lube Axles
- Four Wheel Electric Brakes
- Front Power Electric Jacks (Fifth Wheels Only)
- Front Storage 12V. Compartment Light
- Hitch Light
- Large Entry Assist Handle
- Large White Framed Dark Tinted Jalousie Clamp Ring Windows with Butyl Rubber Seals for Superior UV and Weather Protection
- Lighted Entry Step
- Lockable, Clamp Ring, Radius Baggage Doors with Thumb Grip and Door Catch
- Artwork Decals

- Opaque Jalousie Window in all Toilet Areas
- Porch Light
- Quick Release Jacks Pins (Fifth Wheels Only)
- Roof Ladder (Fifth Wheels Only - Optional on Travel Trailers)
- Shock Absorbers (Travel Trailers Included)
- Single Access Cable, Phone, Satellite Hook Up on Sidewall
- Single Access Fresh Water Fill and City Water Hook-Up with Lock
- Smooth, Easy Operating, Easy Grip, Entry Steps - Extra Wide for Confident Footing
- Steel Clear Coat Rims (No Rusting White Rims)
- Taillight Assembly with Back Up Lights Included
- True Owens Corning® Gelcoat Fiberglass Wall and Front Cap, Including Entry and Baggage Doors for Uniform Color Retention - No Fiberglass Fiber Lines
- UV Automotive Paint Coating is Placed on all Range and Refrigerator Vents to Prevent Premature Color Changes

Kitchen

- Pantry (Where Applicable)
- Formica Countertops with 2" Solid Oak Counter Edge
- 60 x 48" Picture Window at Dinette
- Crown Molding Complementing all Overhead Cabinets in Kitchen Area
- Full 42" Easy Entry, Double Pedestal Dinette Table with 2" Solid Oak Edging
- Lazy Susan (Where Applicable)
- Peek-A-Boo Waste Container in all Rear Living Room Models
- Pre-Drilled and Counter Sunk Fastened Cabinetry with Lumber-Cor® Cabinet Stiles
- Premium Banak Hardwood Framing Lumber on all 1" Material
- Durable, Residential Stainless Steel Sink with Full Twin 8" Deep Wells and (1) Sink Cover
- High Rise Residential Faucet
- Beautiful Solid Ash, Cathedral Style, Overhead Cabinets in the Kitchen Area
- Combination Knife and Spice Rack

- Solid Ash Hardwood Drawer Front with Baltic Birch Side in Convenient 5" and 8" Sizes
- Heavy Duty, Full Extension, Drawer Roller Guides with Travel Locks
- Toe Kicks at the Base of the Kitchen Cabinets

Living Room

- Home Theater Surround Sound Stereo System with CD/DVD Player and Remote Control
- 27" LCD Flat Screen Television in 35L4QB
- 80" Interior Height in all Travel Trailers
- Embossed Woodgrain Passage Doors with Residential Door Handles
- Bedroom and Kitchen or Living Room Vent
- Ceiling Fan with Light in all Fifth Wheels
- Coordinating Wall Paper Border
- Intimate Day / Night Shades
- Hide-A-Bed Sofa
- Lambrequin Style Valances throughout Except in the Bedroom Area
- Phone Jack
- Upgraded Lighting at Sofa and Decorative Overhead Dinette Light
- Wall Clock
- Wall Switched Ceiling Lights in Key Locations
- Fireplace is Standard on the 33LRLBS and Optional on the 33LCDTS
- Swivel Rocker

Bedroom / Bathroom

- 12" - 10 Blade Bathroom Breeze Power Bath Vent with Convenient Wall Switch
- 19' Television Cabinet Area
- Smoked Bronze Glaze on all Interior Mirrors
- Full 60" x 80" Queen Bed with a Residential Style Headboard on All Fifth Wheels and some Travel Trailers (32LFGBS, 32LDTS)
- Combination Pillow Cover and Quilted Bedspread, which includes Elastic Mattress Grips

- Large Bathroom Mirror Medicine Cabinet
- One Piece Molded Residential Style Fiberglass Shower with Seat and Full Glass Surround
- Skylight over the Shower
- Porcelain Toilet
- Full 6'8" of Headroom in all Fifth Wheel Floor Plans

Appliances

- Forest River Exclusive Total Water Filtration System (Even your Shower Water is Filtered)
- 13,500 Ceiling Ducted Air Conditioner
- 30 AMP Detachable Power Cord
- 6 Gallon Gas/Electric DSI Water Heater
- 8 Cu. Ft. Americana Plus Refrigerator with Adjustable Thermostat
- LP Gas Detector
- Carbon Monoxide Detector
- Smoke Detector
- 30" Over the Range Microwave with Built-in Vent (N/A in Canada)
- 22" Over the Range Microwave with Built in Vent (CSA Only)
- Single Residential Style Thermostat for Heating and Cooling
- Solid State 55 AMP Power Converter
- Suburban 30,000 (Minimum) BTU Furnace
- Wall Mount Monitor Panel
- Water Heater By-Pass System for Winterization

Options

- 10 Gallon Gas/Electric Water Heater
- 12V. Battery Disconnect
- 12V. Tank Heaters
- 30" Amana® Convection Oven with Cook Top by Maytag®
- 15,000 BTU Air Conditioner
- 36" Corner Bath Tub
- 20" or 27" Flat Screen Television with Sliding Television Tray (Where Applicable)
- Awning Center Rafter

- Brace and Wire for 2nd Air, (50 AMP Service is Mandatory)
- Fantastic® Fans with Thermostat in Kitchen and Bedroom Areas
- Deluxe Aluminum Rims
- Jack-Knife Sofa Replacing Bottom Bunk (31L2BS, 33LBHTS, and 35L4QB)
- "J" Sofa (29LRGBS Only)
- Fireplace (33LCDTS Only)
- "Big Boy" Free Standing Table with Extension, 4 Chairs, and Sliding Table Top
- Luxurious Solid Surface Style Galley and Bath Sculpted Countertops with Built in Sink Covers (N/A on some Models)
- Majestic Combination Washer / Dryer
- Message Center with Switch Cover
- Mirrored Bath Door
- Lightweight Ultra-Leather Recliners with Ottoman
- La-Z-Boy™ Recliners
- Dirt Devil Central Vacuum System, Space Saving Cleaning Tool Kit and Vac Pan Automatic Dustpan
- Outside Shower
- Rocker Recliner Glider replacing Standard Swivel Rocker
- Roof Ladder (Travel Trailers Only)
- Safety Glass (Tinted)
- Scare Lights - (Doorside or Off Doorside) with Individual Switches
- Selector Switch for Slide-Outs
- Slide-Out Room Awnings
- Thermo Pane Windows (Tinted)
- Trailair® 15,500 Lb. Air Ride Hitch Coupler (Fifth Wheels Only)
- Trailair® Center Point Air Ride Suspension System
- Trailair® Equa-Flex™ Flexible Equalizer
- 50 AMP Service (Mandatory if ordering Brace and Wire for 2nd Air or a 2nd Air Conditioner)

All illustrations and specifications contained in this literature are based on the latest product information at the time of publication. Forest River, Inc. reserves the right to make changes in prices, colors, materials, equipment and specifications at any time without notice and assumes no responsibility for any error in this literature. All units are shipped F.O.B. Topeka, Indiana. • CONSULT YOUR LOCAL DEALER FOR WARRANTY INFORMATION

F-66-028

2006 Forest River, Inc.

Litho U.S.A.

Cedar Creek and Silverback Integrated Aluminum Cage Construction

State-of-the-art construction techniques along with top grade building components give Cedar Creek its reputation for long-lasting quality.



Side Walls

- Handmade 2 x 2 - 16" (or less) OC Sidewalls with Individually Fastened Custom "L" Brackets Combined with Uniroyal® Silaprene Adhesives for a Strong Flexible Frame without Welding or Lamination. (475 PSI at 2" Per Minute, Marine Grade)
- True Owens Corning™ Performance Plus Gelcoat on all Exteriors - The Best of the Best in Fiberglass
- All Baggage Doors and Entry Doors are Made out of True Owens Corning™ Performance Plus Gelcoat to Prevent Uneven Aging of Your Unit
- Automotive UV Clear Coat Paint, Guaranteed for 7 Years, on all Refrigerator Vents, Microwave Vents, and Entry Door Window Frames, Preventing Early Discoloration
- Sidewalls are Bolted to the Floor with 5/16" x 6-1/2" Carriage Bolts at each Outrigger
- Glued R-7 Fiberglass Insulation Expanded to its Full Capacity within the Sidewall Frame
- Designed by Forest River, a New Unique Slide-Out Seal System for Tighter, Stronger Water Protection - First of its Class - Compare It!
- 5 Direction Insulation in all Slide-Out Rooms

Floors

- 3" Aluminum Frame Floor with In-Floor Heat Ducting and Custom "L" Brackets Combined with Uniroyal® Silaprene Adhesives
- 5/8" Tongue and Groove Plywood, Marine Grade
- Cambered 10" I Beam "Z" Frame with Large Support Outriggers and Full Length Welds
- The Tongue and Groove Plywood Floor is Attached to the Aluminum Frame with Silaprene and Screwed every 5"
- Darco Waterproof Underbelly
- Fully Enclosed 4' x 8' ABS Removable Panels for Easier Access into the Underbelly
- R-14 Fiberglass Insulation Only - Plywood, Vinyl, Carpet, Tank Heaters, Carpet Pad, etc. are not Included within These R Values

Roof

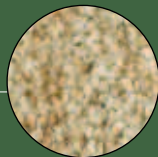
- 1/4" Foam Cor® Insulation Board Weather Barrier (R1 Value)
- Full Length 3/8" Wood Roof Decking for a Full Walk On Roof (Screwed - Not Stapled)
- R-14 (Fiberglass Insulation Only) - Roof Decking, Foam Cor®, and Rubber Membrane are not Included within This R-Value
- 2 x 2 - 16" OC - 4" Truss Roof Frame Combined with Uniroyal® Silaprene
- 2 Ply - Tuff Ply Rubber Roof Membrane with Built-In Fire Retardant
- Full Length Drip Rails with Spouts from the Front to the Rear
- Roof is Bolted to Sidewall with 5/16" x 3-1/2" Carriage Bolts
- New 3" Roof Radius



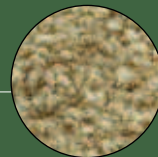
Cold room tested to ZERO degree farenheit with standard insulation and heating pads with no tank freezing!

Fabric Choices

Cedar Creek & Silverback



Maze



Fern



Harmony Pebbles



Vintage Wood



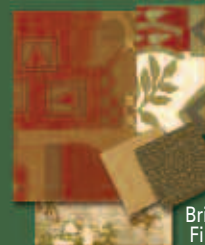
Indigo Suede



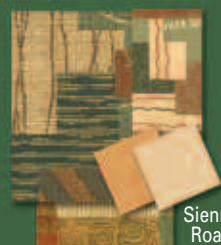
Golden Ebony



Diamond Willow



Brick Fire



Sienna Road